

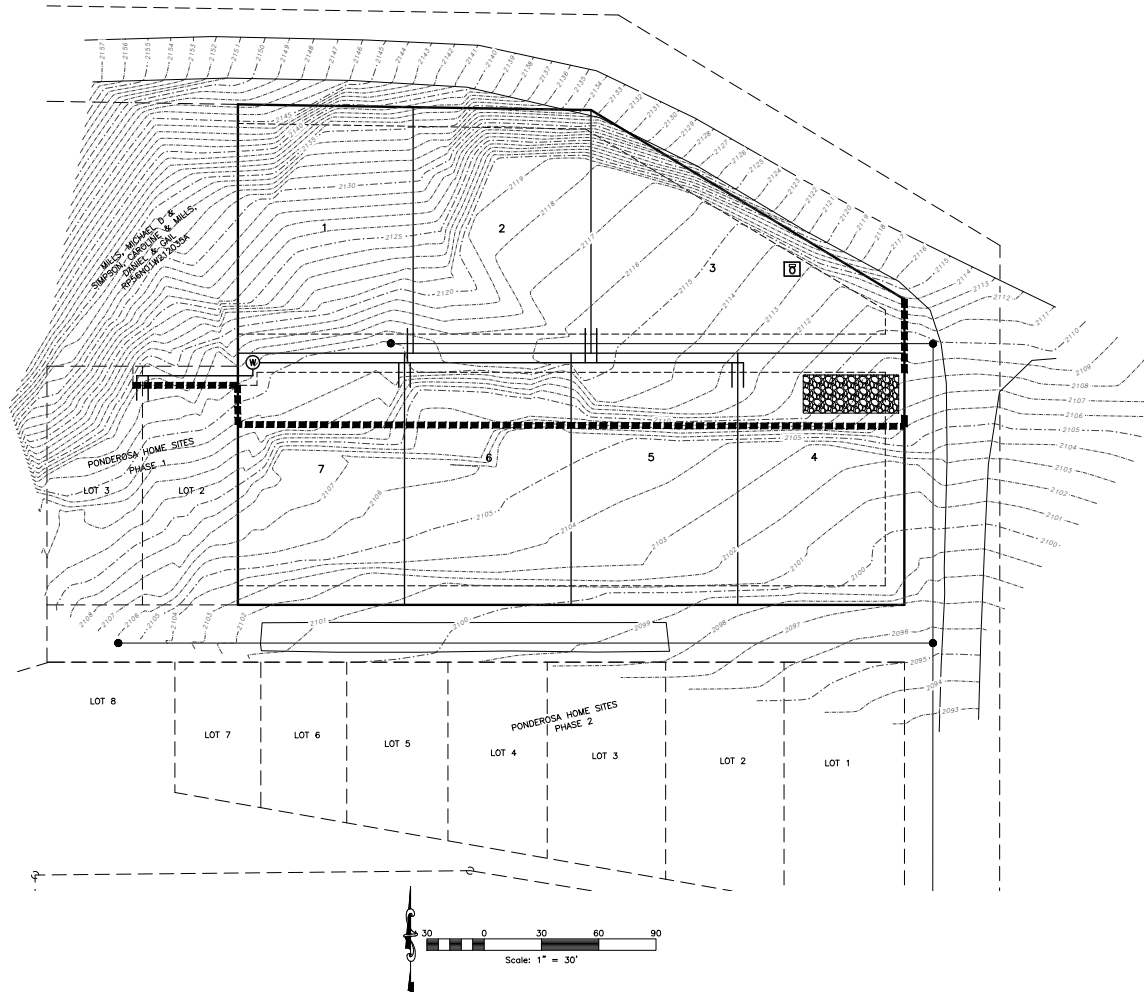
Garfield Bay Subdivision

Storm Water Pollution Prevention Plan Exhibit

BONNER COUNTY, IDAHO
JANUARY 2022



Vicinity Map
NOT TO SCALE



PORTABLE TOILET

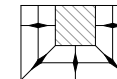
INLET PROTECTION
TYP. (SEE DETAIL)

STRAW BALE FENCE
(SEE DETAIL)

STREETS TO BE SWEEPED WITHIN
1000 FEET OF CONSTRUCTION
ENTRANCE DAILY IF NECESSARY

ALL VEHICLES EXITING SITE
TO PROCEED THROUGH
CONSTRUCTION ENTRANCE
TO REDUCE AMOUNTS OF
SEDIMENT TRACKED ONTO
ROADWAYS.

50'x20' CONSTRUCTION
ENTRANCE W/8" CLEAN
GRAVEL



CONCRETE WASH
AREA (SEE DETAIL)
OR AS SELECTED
BY CONTRACTOR

Construction Activity Schedule

- PROJECT LOCATION.....BONNER COUNTY, IDAHO
- PROJECT BEGINNING DATE.....SPRING 2022
- BMP'S DEPLOYMENT DATE.....SPRING 2022
- STORM WATER MANAGEMENT CONTACT / INSPECTOR.....TBD
- SPECIFIC CONSTRUCTION SCHEDULE INCLUDING BMP CONSTRUCTION SCHEDULE TO BE INCLUDED WITH SWPPP BY OWNER/DEVELOPER



REVISIONS	DESCRIPTION
DATE	

Garfield Bay Subdivision
PART OF THE NE 1/4 OF SECTION 28, T.4N., R. 11W., S.18E., U.S. SURVEY
BONNER COUNTY, IDAHO



Project Info.
Engineer:
J. NATE REEVE, P.E.
Drafter:
J. MEYERS
Begin Date:
JANUARY 2022
Name:
GARFIELD BAY
SUBDIVISION
Number:
7680-02

1
2 Total Sheets

- a. Describe BMP's to protect storm water inlets:
All storm water inlets to be protected by straw water barriers, or gravel bags (see detail).
2. Describe BMP's to eliminate/reduce contamination of storm water from:
a. Equipment / fueling / concrete wash areas:
To be performed in designated areas only and surrounded with silt fence barriers.
b. Soil contaminated by soil amendments:
If any contaminated material is found or generated, contact environmental engineer and contacts listed.
c. Areas of contaminated soil:
If any contaminants are found or generated, contact environmental engineer and contacts listed.
d. Fueling areas:
To be performed in designated areas only and surrounded with silt fence.
e. Vehicle maintenance areas:
To be performed in designated areas only and surrounded with silt fence.
f. Vehicle parking areas:
To be performed in designated areas only and surrounded with silt fence.
g. Equipment storage areas:
To be performed in designated areas only and surrounded with silt fence.
h. Materials storage areas:
To be performed in designated areas only and surrounded with silt fence.
i. Waste containment areas:
To be performed in designated areas only and surrounded with silt fence.
j. Service areas:
To be performed in designated areas only and surrounded with silt fence.
3. BMP's for wind erosion:
Stockpiles and site as needed to be covered regularly to eliminate / control wind erosion
4. Construction Vehicles and Equipment:
a. Maintenance
- Maintain all construction equipment to prevent oil or other fluid leaks.
- Keep vehicles and equipment clean, prevent excessive build-up of oil and grease.
- Regularly inspect on-site vehicles and equipment for leaks, and repair immediately.
- Check incoming and outgoing equipment (including delivery trucks, employees and subcontractor vehicles) for leaking oil and fluid. Do not allow leaking vehicles or equipment on-site.
- Segregate and recycle all waste such as grease, oil, oil or fluid filters, antifreeze, cleaning solutions, automotive batteries, hydraulic, and transmission fluids.
b. Fueling
- If fueling must occur on-site, use designated areas away from drainage.
- Locate on-site fuel storage tanks within a bermed area designed to hold the tank volume.
- Cover retention area with impervious material and install a silt fence to ensure that any spills will be contained in the retention area. To catch spills or leaks when removing or changing fluids.
- Use drip pans for any oil or fluid changes.
c. Washing
- Use as little water as possible to avoid installing erosion and sediment controls for the wash area.
- If washing must occur on-site, use designated, bermed wash areas to prevent waste water discharge into storm water, creeks, rivers, and other water bodies.
- Use phosphate-free, biodegradable soaps.
- Do not permit steam cleaning on-site.
5. Spill Prevention and Control
a. Minor Spills:
Minor spills are those which are likely to be controlled by on-site personnel. After contacting local emergency response agencies, the following actions should be taken upon discovery of a minor spill:
- Contain the spread of the spill.
- If the spill occurs on an impervious surface, clean up using "dry" methods (i.e. absorbent materials, cat litter, and / or dirt).
- If the spill occurs in dry areas, immediately contain the spill by constructing an earth dike. Dig up and properly dispose of contaminated material.
- If the spill occurs during rain, cover the impacted area to avoid runoff.
- Record all steps taken to report and contain spill.
b. Major Spills:
On-site personnel should not attempt to contain major spills until the appropriate and qualified emergency response staff have arrived at the site. For spills of federal reportable quantities, also notify the National Response Center at (800) 424-8802. A written report should be sent to all notified authorities. Failure to report major spills can result in significant fines and penalties.
6. Post Roadway / Utility Construction
a. Maintain good housekeeping practices.
b. Enclose or cover building material storage areas.
c. Properly store materials such as paints and solvents.
d. Store dry and wet materials under cover, away from drainage areas.
e. Avoid mixing excess amounts of fresh concrete or cement on-site.
f. Remove excess of concrete trucks offsite or in designated areas only.
g. Do not wash wet concrete trucks into storm drains, open ditches, streets or streams.
h. Do not place material or debris into streams, gutters or catch basins that stop or reduce the flow of runoff water.
i. All public streets and storm drain facilities shall be maintained free of building materials, mud and debris caused by grading or construction operations. Roads will be swept within 1000' of construction entrance daily, if necessary.
j. Install straw water barrier along all inlets contained within the development and all others that receive runoff from the development.
7. Erosion Control Plan Notes
a. The contractor will designate an emergency contact that can be reached 24 hours a day 7 days a week.
b. A stand-by crew for emergency work shall be available at all times during potential rain or snow runoff events.
c. Necessary materials and equipment on site and stockpiles of conventional locations to facilitate rapid construction of emergency devices when rain or runoff is eminent.
d. Erosion control equipment purchased and approved for the project may not be removed without approval of the engineer of record. If devices are removed, no work may continue that have the potential of erosion without consulting the engineer of record. If deemed necessary erosion control should be reestablished before this work begins.
e. Graded areas adjacent to the site shall be watered at the site perimeter must drain away from the top of the slope at the conclusion of each working day. This should be confirmed by survey or other means acceptable to the engineer of record.
f. All silt and debris shall be removed from all devices within 24 hours after each rain or runoff event.
g. Except as otherwise approved by the Inspector, all removable protective devices shown shall be in place at the end of each working day.
h. All loose soil and debris, which may create a potential hazard to offsite property, shall be removed from the site as required by the engineer of record.
i. The placement of additional devices to reduce erosion damage within the site is left to the discretion of the engineer of record.
j. Installing basins may not be removed or made inoperable without the approval of the engineer of record and the governing agency.
k. Erosion control devices will be modified as need as the project progresses and plans of these changes submitted for approval by the engineer of record and the governing agency.
8. Conduct a minimum of one inspection of the erosion and sediment controls every two weeks. Maintain documentation on site. Submit I.D.C. of general permit UPR00000 identifies the minimum inspection requirements.
a. Part I.D.C. identifies the minimum inspection report requirements.
b. Failure to complete and/or document storm water inspections is a violation of part I.D.C. of Utah General Permit UTS 00000.

