

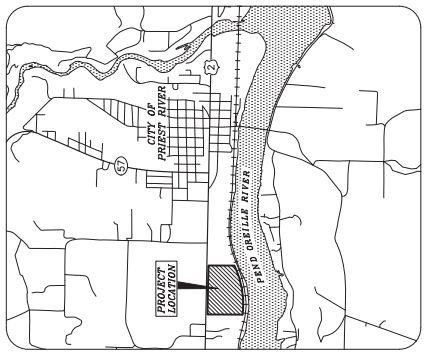




# PRELIMINARY PLAT - RIVER RANCH SUBDIVISION

LYING IN A PORTION OF THE NW 1/4 OF SECTION 26,  
TOWNSHIP 56 NORTH, RANGE 5 WEST, BOISE MERIDIAN,  
BONNER COUNTY, IDAHO

VICINITY MAP - NOT TO SCALE



## OWNERS' CERTIFICATE

KNOWN ALL MEN BY THESE PRESENTS THAT CLAGSTONE LAND LLC, AN IDAHO LIMITED LIABILITY COMPANY AND NATHAN HESTER, A SINGLE MAN, HEREBY CERTIFY THAT THEY ARE THE OWNERS OF THE REAL PROPERTY DESCRIBED IN THIS CERTIFICATE AND HAVE CAUSED THE SAME TO BE PLATED INTO LOTS 1-7, BLOCK 1; LOTS 8-14, BLOCK 2; LOTS 15-21, BLOCK 3; LOTS 22-28, BLOCK 4; LOTS 29-35, BLOCK 5; LOTS 36-42, BLOCK 6; LOTS 43-49, BLOCK 7; LOTS 50-56, BLOCK 8; LOTS 57-63, BLOCK 9; LOTS 64-70, BLOCK 10; LOTS 71-77, BLOCK 11; LOTS 78-84, BLOCK 12; LOTS 85-91, BLOCK 13; LOTS 92-98, BLOCK 14; LOTS 99-105, BLOCK 15; LOTS 106-112, BLOCK 16; LOTS 113-119, BLOCK 17; LOTS 120-126, BLOCK 18; LOTS 127-133, BLOCK 19; LOTS 134-140, BLOCK 20; LOTS 141-147, BLOCK 21; LOTS 148-154, BLOCK 22; LOTS 155-161, BLOCK 23; LOTS 162-168, BLOCK 24; LOTS 169-175, BLOCK 25; LOTS 176-182, BLOCK 26; LOTS 183-189, BLOCK 27; LOTS 190-196, BLOCK 28; LOTS 197-203, BLOCK 29; LOTS 204-210, BLOCK 30; LOTS 211-217, BLOCK 31; LOTS 218-224, BLOCK 32; LOTS 225-231, BLOCK 33; LOTS 232-238, BLOCK 34; LOTS 239-245, BLOCK 35; LOTS 246-252, BLOCK 36; LOTS 253-259, BLOCK 37; LOTS 260-266, BLOCK 38; LOTS 267-273, BLOCK 39; LOTS 274-280, BLOCK 40; LOTS 281-287, BLOCK 41; LOTS 288-294, BLOCK 42; LOTS 295-301, BLOCK 43; LOTS 302-308, BLOCK 44; LOTS 309-315, BLOCK 45; LOTS 316-322, BLOCK 46; LOTS 323-329, BLOCK 47; LOTS 330-336, BLOCK 48; LOTS 337-343, BLOCK 49; LOTS 344-350, BLOCK 50; LOTS 351-357, BLOCK 51; LOTS 358-364, BLOCK 52; LOTS 365-371, BLOCK 53; LOTS 372-378, BLOCK 54; LOTS 379-385, BLOCK 55; LOTS 386-392, BLOCK 56; LOTS 393-399, BLOCK 57; LOTS 400-406, BLOCK 58; LOTS 407-413, BLOCK 59; LOTS 414-420, BLOCK 60; LOTS 421-427, BLOCK 61; LOTS 428-434, BLOCK 62; LOTS 435-441, BLOCK 63; LOTS 442-448, BLOCK 64; LOTS 449-455, BLOCK 65; LOTS 456-462, BLOCK 66; LOTS 463-469, BLOCK 67; LOTS 470-476, BLOCK 68; LOTS 477-483, BLOCK 69; LOTS 484-490, BLOCK 70; LOTS 491-497, BLOCK 71; LOTS 498-504, BLOCK 72; LOTS 505-511, BLOCK 73; LOTS 512-518, BLOCK 74; LOTS 519-525, BLOCK 75; LOTS 526-532, BLOCK 76; LOTS 533-539, BLOCK 77; LOTS 540-546, BLOCK 78; LOTS 547-553, BLOCK 79; LOTS 554-560, BLOCK 80; LOTS 561-567, BLOCK 81; LOTS 568-574, BLOCK 82; LOTS 575-581, BLOCK 83; LOTS 582-588, BLOCK 84; LOTS 589-595, BLOCK 85; LOTS 596-602, BLOCK 86; LOTS 603-609, BLOCK 87; LOTS 610-616, BLOCK 88; LOTS 617-623, BLOCK 89; LOTS 624-630, BLOCK 90; LOTS 631-637, BLOCK 91; LOTS 638-644, BLOCK 92; LOTS 645-651, BLOCK 93; LOTS 652-658, BLOCK 94; LOTS 659-665, BLOCK 95; LOTS 666-672, BLOCK 96; LOTS 673-679, BLOCK 97; LOTS 680-686, BLOCK 98; LOTS 687-693, BLOCK 99; LOTS 694-700, BLOCK 100; LOTS 701-707, BLOCK 101; LOTS 708-714, BLOCK 102; LOTS 715-721, BLOCK 103; LOTS 722-728, BLOCK 104; LOTS 729-735, BLOCK 105; LOTS 736-742, BLOCK 106; LOTS 743-749, BLOCK 107; LOTS 750-756, BLOCK 108; LOTS 757-763, BLOCK 109; LOTS 764-770, BLOCK 110; LOTS 771-777, BLOCK 111; LOTS 778-784, BLOCK 112; LOTS 785-791, BLOCK 113; LOTS 792-798, BLOCK 114; LOTS 799-805, BLOCK 115; LOTS 806-812, BLOCK 116; LOTS 813-819, BLOCK 117; LOTS 820-826, BLOCK 118; LOTS 827-833, BLOCK 119; LOTS 834-840, BLOCK 120; LOTS 841-847, BLOCK 121; LOTS 848-854, BLOCK 122; LOTS 855-861, BLOCK 123; LOTS 862-868, BLOCK 124; LOTS 869-875, BLOCK 125; LOTS 876-882, BLOCK 126; LOTS 883-889, BLOCK 127; LOTS 890-896, BLOCK 128; LOTS 897-903, BLOCK 129; LOTS 904-910, BLOCK 130; LOTS 911-917, BLOCK 131; LOTS 918-924, BLOCK 132; LOTS 925-931, BLOCK 133; LOTS 932-938, BLOCK 134; LOTS 939-945, BLOCK 135; LOTS 946-952, BLOCK 136; LOTS 953-959, BLOCK 137; LOTS 960-966, BLOCK 138; LOTS 967-973, BLOCK 139; LOTS 974-980, BLOCK 140; LOTS 981-987, BLOCK 141; LOTS 988-994, BLOCK 142; LOTS 995-1001, BLOCK 143; LOTS 1002-1008, BLOCK 144; LOTS 1009-1015, BLOCK 145; LOTS 1016-1022, BLOCK 146; LOTS 1023-1029, BLOCK 147; LOTS 1030-1036, BLOCK 148; LOTS 1037-1043, BLOCK 149; LOTS 1044-1050, BLOCK 150; LOTS 1051-1057, BLOCK 151; LOTS 1058-1064, BLOCK 152; LOTS 1065-1071, BLOCK 153; LOTS 1072-1078, BLOCK 154; LOTS 1079-1085, BLOCK 155; LOTS 1086-1092, BLOCK 156; LOTS 1093-1099, BLOCK 157; LOTS 1100-1106, BLOCK 158; LOTS 1107-1113, BLOCK 159; LOTS 1114-1120, BLOCK 160; LOTS 1121-1127, BLOCK 161; LOTS 1128-1134, BLOCK 162; LOTS 1135-1141, BLOCK 163; LOTS 1142-1148, BLOCK 164; LOTS 1149-1155, BLOCK 165; LOTS 1156-1162, BLOCK 166; LOTS 1163-1169, BLOCK 167; LOTS 1170-1176, BLOCK 168; LOTS 1177-1183, BLOCK 169; LOTS 1184-1190, BLOCK 170; LOTS 1191-1197, BLOCK 171; LOTS 1198-1204, BLOCK 172; LOTS 1205-1211, BLOCK 173; LOTS 1212-1218, BLOCK 174; LOTS 1219-1225, BLOCK 175; LOTS 1226-1232, BLOCK 176; LOTS 1233-1239, BLOCK 177; LOTS 1240-1246, BLOCK 178; LOTS 1247-1253, BLOCK 179; LOTS 1254-1260, BLOCK 180; LOTS 1261-1267, BLOCK 181; LOTS 1268-1274, BLOCK 182; LOTS 1275-1281, BLOCK 183; LOTS 1282-1288, BLOCK 184; LOTS 1289-1295, BLOCK 185; LOTS 1296-1302, BLOCK 186; LOTS 1303-1309, BLOCK 187; LOTS 1310-1316, BLOCK 188; LOTS 1317-1323, BLOCK 189; LOTS 1324-1330, BLOCK 190; LOTS 1331-1337, BLOCK 191; LOTS 1338-1344, BLOCK 192; LOTS 1345-1351, BLOCK 193; LOTS 1352-1358, BLOCK 194; LOTS 1359-1365, BLOCK 195; LOTS 1366-1372, BLOCK 196; LOTS 1373-1379, BLOCK 197; LOTS 1380-1386, BLOCK 198; LOTS 1387-1393, BLOCK 199; LOTS 1394-1400, BLOCK 200; LOTS 1401-1407, BLOCK 201; LOTS 1408-1414, BLOCK 202; LOTS 1415-1421, BLOCK 203; LOTS 1422-1428, BLOCK 204; LOTS 1429-1435, BLOCK 205; LOTS 1436-1442, BLOCK 206; LOTS 1443-1449, BLOCK 207; LOTS 1450-1456, BLOCK 208; LOTS 1457-1463, BLOCK 209; LOTS 1464-1470, BLOCK 210; LOTS 1471-1477, BLOCK 211; LOTS 1478-1484, BLOCK 212; LOTS 1485-1491, BLOCK 213; LOTS 1492-1498, BLOCK 214; LOTS 1499-1505, BLOCK 215; LOTS 1506-1512, BLOCK 216; LOTS 1513-1519, BLOCK 217; LOTS 1520-1526, BLOCK 218; LOTS 1527-1533, BLOCK 219; LOTS 1534-1540, BLOCK 220; LOTS 1541-1547, BLOCK 221; LOTS 1548-1554, BLOCK 222; LOTS 1555-1561, BLOCK 223; LOTS 1562-1568, BLOCK 224; LOTS 1569-1575, BLOCK 225; LOTS 1576-1582, BLOCK 226; LOTS 1583-1589, BLOCK 227; LOTS 1590-1596, BLOCK 228; LOTS 1597-1603, BLOCK 229; LOTS 1604-1610, BLOCK 230; LOTS 1611-1617, BLOCK 231; LOTS 1618-1624, BLOCK 232; LOTS 1625-1631, BLOCK 233; LOTS 1632-1638, BLOCK 234; LOTS 1639-1645, BLOCK 235; LOTS 1646-1652, BLOCK 236; LOTS 1653-1659, BLOCK 237; LOTS 1660-1666, BLOCK 238; LOTS 1667-1673, BLOCK 239; LOTS 1674-1680, BLOCK 240; LOTS 1681-1687, BLOCK 241; LOTS 1688-1694, BLOCK 242; LOTS 1695-1701, BLOCK 243; LOTS 1702-1708, BLOCK 244; LOTS 1709-1715, BLOCK 245; LOTS 1716-1722, BLOCK 246; LOTS 1723-1729, BLOCK 247; LOTS 1730-1736, BLOCK 248; LOTS 1737-1743, BLOCK 249; LOTS 1744-1750, BLOCK 250; LOTS 1751-1757, BLOCK 251; LOTS 1758-1764, BLOCK 252; LOTS 1765-1771, BLOCK 253; LOTS 1772-1778, BLOCK 254; LOTS 1779-1785, BLOCK 255; LOTS 1786-1792, BLOCK 256; LOTS 1793-1799, BLOCK 257; LOTS 1800-1806, BLOCK 258; LOTS 1807-1813, BLOCK 259; LOTS 1814-1820, BLOCK 260; LOTS 1821-1827, BLOCK 261; LOTS 1828-1834, BLOCK 262; LOTS 1835-1841, BLOCK 263; LOTS 1842-1848, BLOCK 264; LOTS 1849-1855, BLOCK 265; LOTS 1856-1862, BLOCK 266; LOTS 1863-1869, BLOCK 267; LOTS 1870-1876, BLOCK 268; LOTS 1877-1883, BLOCK 269; LOTS 1884-1890, BLOCK 270; LOTS 1891-1897, BLOCK 271; LOTS 1898-1904, BLOCK 272; LOTS 1905-1911, BLOCK 273; LOTS 1912-1918, BLOCK 274; LOTS 1919-1925, BLOCK 275; LOTS 1926-1932, BLOCK 276; LOTS 1933-1939, BLOCK 277; LOTS 1940-1946, BLOCK 278; LOTS 1947-1953, BLOCK 279; LOTS 1954-1960, BLOCK 280; LOTS 1961-1967, BLOCK 281; LOTS 1968-1974, BLOCK 282; LOTS 1975-1981, BLOCK 283; LOTS 1982-1988, BLOCK 284; LOTS 1989-1995, BLOCK 285; LOTS 1996-2002, BLOCK 286; LOTS 2003-2009, BLOCK 287; LOTS 2010-2016, BLOCK 288; LOTS 2017-2023, BLOCK 289; LOTS 2024-2030, BLOCK 290; LOTS 2031-2037, BLOCK 291; LOTS 2038-2044, BLOCK 292; LOTS 2045-2051, BLOCK 293; LOTS 2052-2058, BLOCK 294; LOTS 2059-2065, BLOCK 295; LOTS 2066-2072, BLOCK 296; LOTS 2073-2079, BLOCK 297; LOTS 2080-2086, BLOCK 298; LOTS 2087-2093, BLOCK 299; LOTS 2094-2100, BLOCK 300; LOTS 2101-2107, BLOCK 301; LOTS 2108-2114, BLOCK 302; LOTS 2115-2121, BLOCK 303; LOTS 2122-2128, BLOCK 304; LOTS 2129-2135, BLOCK 305; LOTS 2136-2142, BLOCK 306; LOTS 2143-2149, BLOCK 307; LOTS 2150-2156, BLOCK 308; LOTS 2157-2163, BLOCK 309; LOTS 2164-2170, BLOCK 310; LOTS 2171-2177, BLOCK 311; LOTS 2178-2184, BLOCK 312; LOTS 2185-2191, BLOCK 313; LOTS 2192-2198, BLOCK 314; LOTS 2199-2205, BLOCK 315; LOTS 2206-2212, BLOCK 316; LOTS 2213-2219, BLOCK 317; LOTS 2220-2226, BLOCK 318; LOTS 2227-2233, BLOCK 319; LOTS 2234-2240, BLOCK 320; LOTS 2241-2247, BLOCK 321; LOTS 2248-2254, BLOCK 322; LOTS 2255-2261, BLOCK 323; LOTS 2262-2268, BLOCK 324; LOTS 2269-2275, BLOCK 325; LOTS 2276-2282, BLOCK 326; LOTS 2283-2289, BLOCK 327; LOTS 2290-2296, BLOCK 328; LOTS 2297-2303, BLOCK 329; LOTS 2304-2310, BLOCK 330; LOTS 2311-2317, BLOCK 331; LOTS 2318-2324, BLOCK 332; LOTS 2325-2331, BLOCK 333; LOTS 2332-2338, BLOCK 334; LOTS 2339-2345, BLOCK 335; LOTS 2346-2352, BLOCK 336; LOTS 2353-2359, BLOCK 337; LOTS 2360-2366, BLOCK 338; LOTS 2367-2373, BLOCK 339; LOTS 2374-2380, BLOCK 340; LOTS 2381-2387, BLOCK 341; LOTS 2388-2394, BLOCK 342; LOTS 2395-2401, BLOCK 343; LOTS 2402-2408, BLOCK 344; LOTS 2409-2415, BLOCK 345; LOTS 2416-2422, BLOCK 346; LOTS 2423-2429, BLOCK 347; LOTS 2430-2436, BLOCK 348; LOTS 2437-2443, BLOCK 349; LOTS 2444-2450, BLOCK 350; LOTS 2451-2457, BLOCK 351; LOTS 2458-2464, BLOCK 352; LOTS 2465-2471, BLOCK 353; LOTS 2472-2478, BLOCK 354; LOTS 2479-2485, BLOCK 355; LOTS 2486-2492, BLOCK 356; LOTS 2493-2499, BLOCK 357; LOTS 2500-2506, BLOCK 358; LOTS 2507-2513, BLOCK 359; LOTS 2514-2520, BLOCK 360; LOTS 2521-2527, BLOCK 361; LOTS 2528-2534, BLOCK 362; LOTS 2535-2541, BLOCK 363; LOTS 2542-2548, BLOCK 364; LOTS 2549-2555, BLOCK 365; LOTS 2556-2562, BLOCK 366; LOTS 2563-2569, BLOCK 367; LOTS 2570-2576, BLOCK 368; LOTS 2577-2583, BLOCK 369; LOTS 2584-2590, BLOCK 370; LOTS 2591-2597, BLOCK 371; LOTS 2598-2604, BLOCK 372; LOTS 2605-2611, BLOCK 373; LOTS 2612-2618, BLOCK 374; LOTS 2619-2625, BLOCK 375; LOTS 2626-2632, BLOCK 376; LOTS 2633-2639, BLOCK 377; LOTS 2640-2646, BLOCK 378; LOTS 2647-2653, BLOCK 379; LOTS 2654-2660, BLOCK 380; LOTS 2661-2667, BLOCK 381; LOTS 2668-2674, BLOCK 382; LOTS 2675-2681, BLOCK 383; LOTS 2682-2688, BLOCK 384; LOTS 2689-2695, BLOCK 385; LOTS 2696-2702, BLOCK 386; LOTS 2703-2709, BLOCK 387; LOTS 2710-2716, BLOCK 388; LOTS 2717-2723, BLOCK 389; LOTS 2724-2730, BLOCK 390; LOTS 2731-2737, BLOCK 391; LOTS 2738-2744, BLOCK 392; LOTS 2745-2751, BLOCK 393; LOTS 2752-2758, BLOCK 394; LOTS 2759-2765, BLOCK 395; LOTS 2766-2772, BLOCK 396; LOTS 2773-2779, BLOCK 397; LOTS 2780-2786, BLOCK 398; LOTS 2787-2793, BLOCK 399; LOTS 2794-2800, BLOCK 400; LOTS 2801-2807, BLOCK 401; LOTS 2808-2814, BLOCK 402; LOTS 2815-2821, BLOCK 403; LOTS 2822-2828, BLOCK 404; LOTS 2829-2835, BLOCK 405; LOTS 2836-2842, BLOCK 406; LOTS 2843-2849, BLOCK 407; LOTS 2850-2856, BLOCK 408; LOTS 2857-2863, BLOCK 409; LOTS 2864-2870, BLOCK 410; LOTS 2871-2877, BLOCK 411; LOTS 2878-2884, BLOCK 412; LOTS 2885-2891, BLOCK 413; LOTS 2892-2898, BLOCK 414; LOTS 2899-2905, BLOCK 415; LOTS 2906-2912, BLOCK 416; LOTS 2913-2919, BLOCK 417; LOTS 2920-2926, BLOCK 418; LOTS 2927-2933, BLOCK 419; LOTS 2934-2940, BLOCK 420; LOTS 2941-2947, BLOCK 421; LOTS 2948-2954, BLOCK 422; LOTS 2955-2961, BLOCK 423; LOTS 2962-2968, BLOCK 424; LOTS 2969-2975, BLOCK 425; LOTS 2976-2982, BLOCK 426; LOTS 2983-2989, BLOCK 427; LOTS 2990-2996, BLOCK 428; LOTS 2997-3003, BLOCK 429; LOTS 3004-3010, BLOCK 430; LOTS 3011-3017, BLOCK 431; LOTS 3018-3024, BLOCK 432; LOTS 3025-3031, BLOCK 433; LOTS 3032-3038, BLOCK 434; LOTS 3039-3045, BLOCK 435; LOTS 3046-3052, BLOCK 436; LOTS 3053-3059, BLOCK 437; LOTS 3060-3066, BLOCK 438; LOTS 3067-3073, BLOCK 439; LOTS 3074-3080, BLOCK 440; LOTS 3081-3087, BLOCK 441; LOTS 3088-3094, BLOCK 442; LOTS 3095-3101, BLOCK 443; LOTS 3102-3108, BLOCK 444; LOTS 3109-3115, BLOCK 445; LOTS 3116-3122, BLOCK 446; LOTS 3123-3129, BLOCK 447; LOTS 3130-3136, BLOCK 448; LOTS 3137-3143, BLOCK 449; LOTS 3144-3150, BLOCK 450; LOTS 3151-3157, BLOCK 451; LOTS 3158-3164, BLOCK 452; LOTS 3165-3171, BLOCK 453; LOTS 3172-3178, BLOCK 454; LOTS 3179-3185, BLOCK 455; LOTS 3186-3192, BLOCK 456; LOTS 3193-3199, BLOCK 457; LOTS 3200-3206, BLOCK 458; LOTS 3207-3213, BLOCK 459; LOTS 3214-3220, BLOCK 460; LOTS 3221-3227, BLOCK 461; LOTS 3228-3234, BLOCK 462; LOTS 3235-3241, BLOCK 463; LOTS 3242-3248, BLOCK 464; LOTS 3249-3255, BLOCK 465; LOTS 3256-3262, BLOCK 466; LOTS 3263-3269, BLOCK 467; LOTS 3270-3276, BLOCK 468; LOTS 3277-3283, BLOCK 469; LOTS 3284-3290, BLOCK 470; LOTS 3291-3297, BLOCK 471; LOTS 3298-3304, BLOCK 472; LOTS 3305-3311, BLOCK 473; LOTS 3312-3318, BLOCK 474; LOTS 3319-3325, BLOCK 475; LOTS 3326-3332, BLOCK 476; LOTS 3333-3339, BLOCK 477; LOTS 3340-3346, BLOCK 478; LOTS 3347-3353, BLOCK 479; LOTS 3354-3360, BLOCK 480; LOTS 3361-3367, BLOCK 481; LOTS 3368-3374, BLOCK 482; LOTS 3375-3381, BLOCK 483; LOTS 3382-3388, BLOCK 484; LOTS 3389-3395, BLOCK 485; LOTS 3396-3402, BLOCK 486; LOTS 3403-3409, BLOCK 487; LOTS 3410-3416, BLOCK 488; LOTS 3417-3423, BLOCK 489; LOTS 3424-3430, BLOCK 490; LOTS 3431-3437, BLOCK 491; LOTS 3438-3444, BLOCK 492; LOTS 3445-3451, BLOCK 493; LOTS 3452-3458, BLOCK 494; LOTS 3459-3465, BLOCK 495; LOTS 3466-3472, BLOCK 496; LOTS 3473-3479, BLOCK 497; LOTS 3480-3486, BLOCK 498; LOTS 3487-3493, BLOCK 499; LOTS 3494-3500, BLOCK 500; LOTS 3501-3507, BLOCK 501; LOTS 3508-3514, BLOCK 502; LOTS 3515-3521, BLOCK 503; LOTS 3522-3528, BLOCK 504; LOTS 3529-3535, BLOCK 505; LOTS 3536-3542, BLOCK 506; LOTS 3543-3549, BLOCK 507; LOTS 3550-3556, BLOCK 508; LOTS 3557-3563, BLOCK 509; LOTS 3564-3570, BLOCK 510; LOTS 3571-3577, BLOCK 511; LOTS 3578-3584, BLOCK 512; LOTS 3585-3591, BLOCK 513; LOTS 3592-3598, BLOCK 514; LOTS 3599-3605, BLOCK 515; LOTS 3606-3612, BLOCK 516; LOTS 3613-3619, BLOCK 517; LOTS 3620-3626, BLOCK 518; LOTS 3627-3633, BLOCK 519; LOTS 3634-3640, BLOCK 520; LOTS 3641-3647, BLOCK 521; LOTS 3648-3654, BLOCK 522; LOTS 3655-3661, BLOCK 523; LOTS 3662-3668, BLOCK 524; LOTS 3669-3675, BLOCK 525; LOTS 3676-3682, BLOCK 526; LOTS 3683-3689, BLOCK 527; LOTS 3690-3696, BLOCK 528; LOTS 3697-3703, BLOCK 529; LOTS 3704-3710, BLOCK 530; LOTS 3711-3717, BLOCK 531; LOTS 3718-3724, BLOCK 532; LOTS 3725-3731, BLOCK 533; LOTS 3732-3738, BLOCK 534; LOTS 3739-3745, BLOCK 535; LOTS 3746-3752, BLOCK 536; LOTS 3753-3759, BLOCK 537; LOTS 3760-3766, BLOCK 538; LOTS 3767-3773, BLOCK 539; LOTS 3774-3780, BLOCK 540; LOTS 3781-3787, BLOCK 541; LOTS 3788-3794, BLOCK 542; LOTS 3795-3801, BLOCK 543; LOTS 3802-3808, BLOCK 544; LOTS 3809-3815, BLOCK 545; LOTS 3816-3822, BLOCK 546; LOTS 3823-3829, BLOCK 547; LOTS 3830-3836, BLOCK 548; LOTS 3837-3843, BLOCK 549; LOTS 3844-3850, BLOCK 550; LOTS 3851-3857, BLOCK 551; LOTS 3858-3864, BLOCK 552; LOTS 3865-3871, BLOCK 553; LOTS 3872-3878, BLOCK 554; LOTS 3879-3885, BLOCK 555; LOTS 3886-3892, BLOCK 556; LOTS 3893-3899, BLOCK 557; LOTS 3900-3906, BLOCK 558; LOTS 3907-3913, BLOCK 559; LOTS 3914-3920, BLOCK 560; LOTS 3921-3927, BLOCK 561; LOTS 3928-3934, BLOCK 562; LOTS 3935-3941, BLOCK 563; LOTS 3942-3948, BLOCK 564; LOTS 3949-3955, BLOCK 565; LOTS 3956-3962, BLOCK 566; LOTS 3963-3969, BLOCK 567; LOTS 3970-3976, BLOCK 568; LOTS 3977-3983, BLOCK 569; LOTS 3984-3990, BLOCK 570; LOTS 3991-3997, BLOCK 571; LOTS 3998-4004, BLOCK 572; LOTS 4005-4011, BLOCK 573; LOTS 4012-4018, BLOCK 574; LOTS 4019-4025, BLOCK 575; LOTS 4026-4032, BLOCK 576; LOTS 4033-4039, BLOCK 577; LOTS 4040-4046, BLOCK 578; LOTS 4047-4053, BLOCK 579; LOTS 4054-4060, BLOCK 580; LOTS 4061-4067, BLOCK 581; LOTS 4068-4074, BLOCK 582; LOTS 4075-4081, BLOCK 583; LOTS 4082-4088, BLOCK 584; LOTS 4089-4095, BLOCK 585; LOTS 4096-4102, BLOCK 586; LOTS 4103-4109, BLOCK 587; LOTS 4110-4116, BLOCK 588; LOTS 4117-4123, BLOCK 589; LOTS 4124-4130, BLOCK 590; LOTS 4131-4137, BLOCK 591; LOTS 4138-4144, BLOCK 592; LOTS 4145-4151, BLOCK 593; LOTS 4152-4158, BLOCK 594; LOTS 4159-4165, BLOCK 595; LOTS 4166-4172, BLOCK 596; LOTS 4173-4179, BLOCK 597; LOTS 4180-4186, BLOCK 598; LOTS 4187-4193, BLOCK 599; LOTS 4194-4200, BLOCK 600; LOTS 4201-4207, BLOCK 601; LOTS 4208-4214, BLOCK 602; LOTS 4215-4221, BLOCK 603; LOTS 4222-4228, BLOCK 604; LOTS 4229-4235, BLOCK 605; LOTS 4236-4242, BLOCK 606; LOTS 4243-4249, BLOCK 607; LOTS 4250-4256, BLOCK 608; LOTS 4257-4263, BLOCK 609; LOTS 4264-4270, BLOCK 610; LOTS 4271-4277, BLOCK 611; LOTS 4278-4284, BLOCK 612; LOTS 4285-4291, BLOCK 613; LOTS 4292-4298, BLOCK 614; LOTS 4299-4305, BLOCK 615; LOTS 4306-4312, BLOCK 616; LOTS 4313-4319, BLOCK 617; LOTS 4320-4326, BLOCK 618; LOTS 4327-4333, BLOCK 619; LOTS 4334-4340, BLOCK 620; LOTS 4341-4347, BLOCK 621; LOTS 4348-4354, BLOCK 622; LOTS 4355-4361, BLOCK 623; LOTS 4362-4368, BLOCK 624; LOTS 4369-4375, BLOCK 625; LOTS 4376-4382, BLOCK 626; LOTS 4383-4389, BLOCK 627; LOTS 4390-4396, BLOCK 628; LOTS 4397-4403, BLOCK 629; LOTS 4404-4410, BLOCK 630; LOTS 4411-4417, BLOCK 631; LOTS 4418-4424, BLOCK 632; LOTS 4425-4431, BLOCK 633; LOTS 4432-4438, BLOCK 634; LOTS 4439-4445, BLOCK 635; LOTS 4446-4452, BLOCK 636; LOTS 4453-4459, BLOCK 637; LOTS 4460-4466, BLOCK 638; LOTS 4467-4473, BLOCK 639; LOTS 4474-4480, BLOCK 640; LOTS 4481-4487, BLOCK 641; LOTS 4488-4494, BLOCK 642; LOTS 4495-4501, BLOCK 643; LOTS 4502-4508, BLOCK 644; LOTS 4509-4515, BLOCK 645; LOTS 4516-4522, BLOCK 646; LOTS 4523-4529, BLOCK 647; LOTS 4530-4536, BLOCK 648; LOTS 4537-4543, BLOCK 649; LOTS 4544-4550, BLOCK 650; LOTS 4551-4557, BLOCK 651; LOTS 4558-4564, BLOCK 652; LOTS 4565-4571, BLOCK 653; LOTS 4572-4578, BLOCK 65

# PRELIMINARY PLAT RIVER RANCH SUBDIVISION TOPOGRAPHIC MAP

LYING IN A PORTION OF THE NW 1/4 OF SECTION 26,  
TOWNSHIP 56 NORTH, RANGE 5 WEST, BOISE MERIDIAN,  
BONNER COUNTY, IDAHO

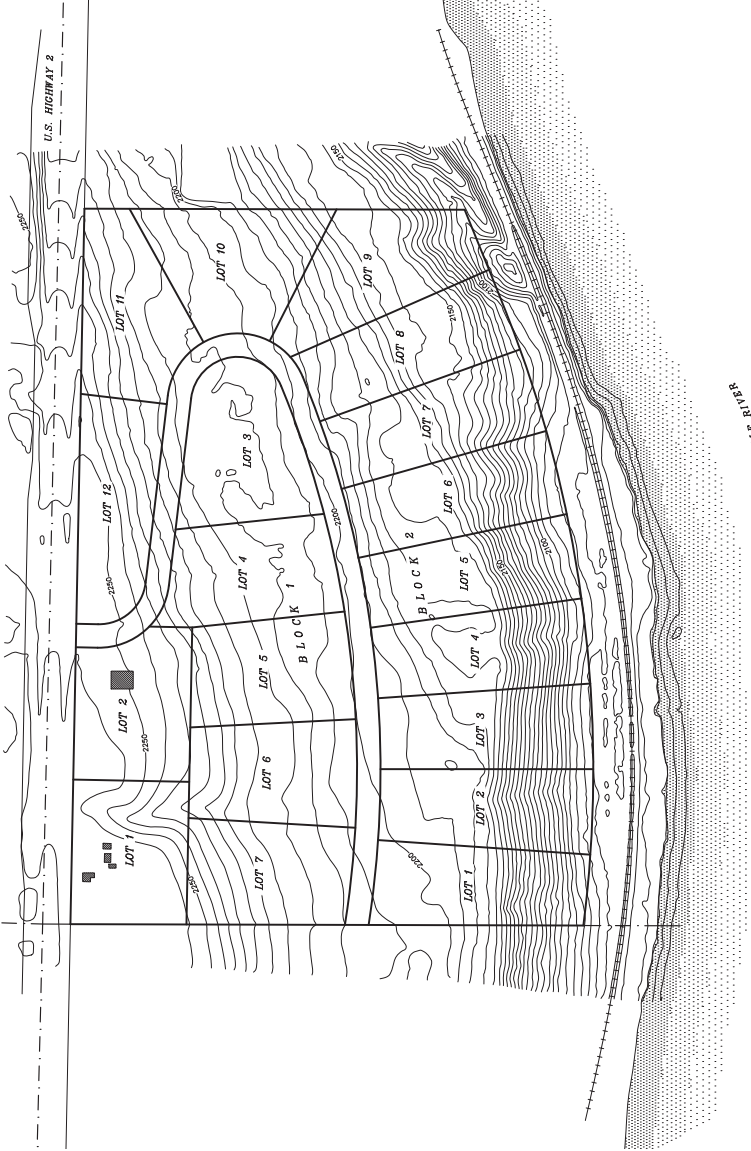


VERTICAL DATUM = NORTH AMERICAN  
VERTICAL DATUM OF 1988 (NAVD88)  
CONTOUR INTERVAL = 5 FOOT

### LEGEND



EXISTING BUILDING (TYPICAL)



Section	26	Range	56	Township	5 N W
	PROJECT # 23-050 78 ENC-WESTER		DRAWING NAME 23-050 78 ENC-WESTER PLAT		

**RIVER RANCH  
SUBDIVISION**

GLAHE & ASSOCIATES  
PROFESSIONAL LAND SURVEYORS  
303 Church Street  
Sandwich, Idaho 83664  
208-285-4474

Scale: 1" = 200'  
Checked By: JLA Date: 6/2  
Prepared By: SFD Date: 11/2/2023

Sheet: 4 of 4