

WIRELESS NETWORK CONSULTING



ID-5108 / Verizon FISH CREEK
Capacity Cell Split

ALTERNATIVE SITE ANALYSIS

Alternate Site Analysis

- † Reviewed existing towers in the area around the proposed
- † Reviewed them for colocation potential to cover the same area as the proposed

Proposed Site

- † 125' Monopole Tower
 - With 10' lightning rod
 - 34754 Hwy 41 Oldtown, ID 83822
 - Latitude: 48.128822 N (NAD83)
 - Longitude: -117.027356 W (NAD83)
 - Ground Elevation: 2354.6' (NAVD88)
 - Anchor tenant is Verizon
 - Antenna Centerline at 116' AGL

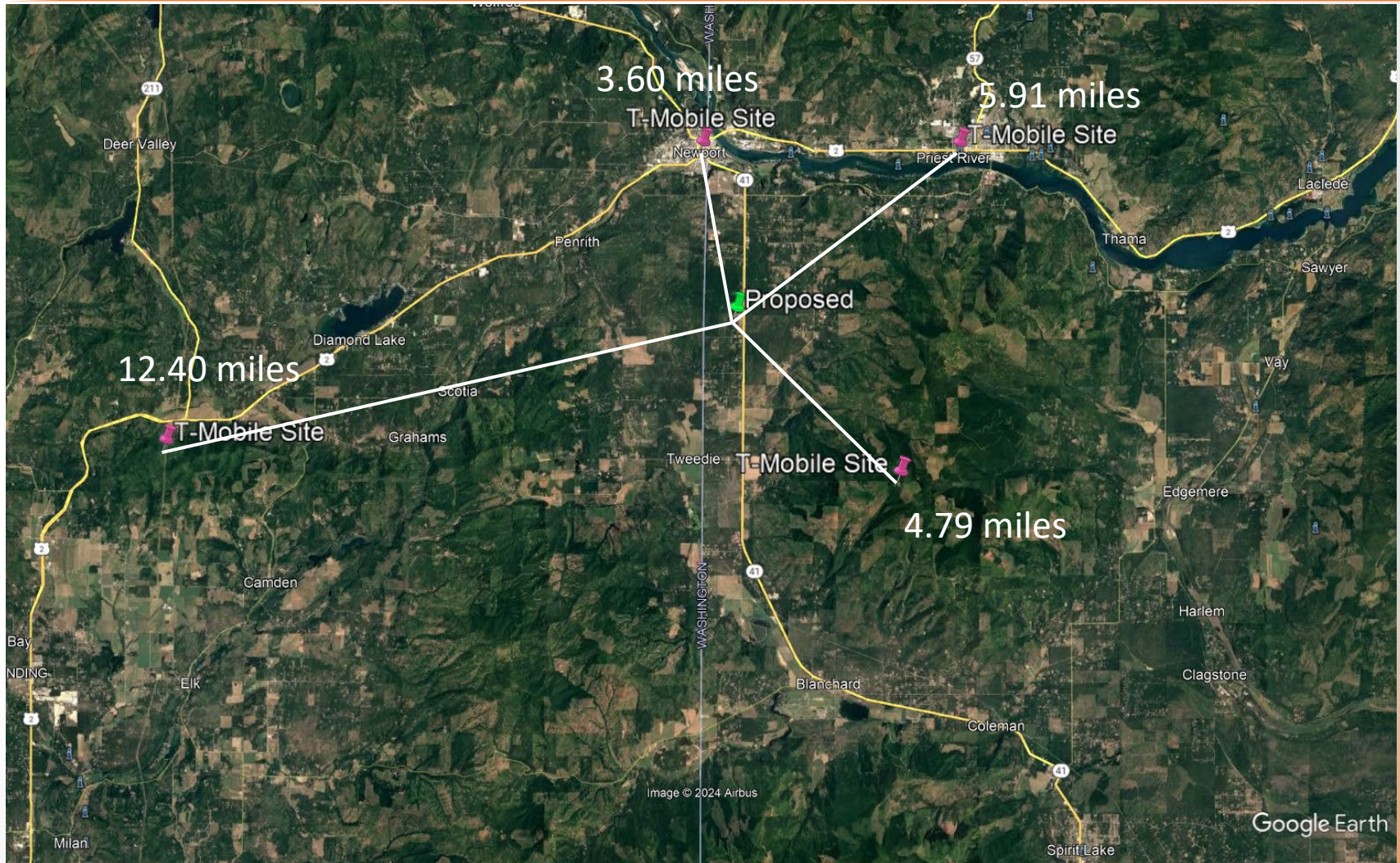
AT&T Sites



Average distance to neighbor sites: 7.97 miles

2024

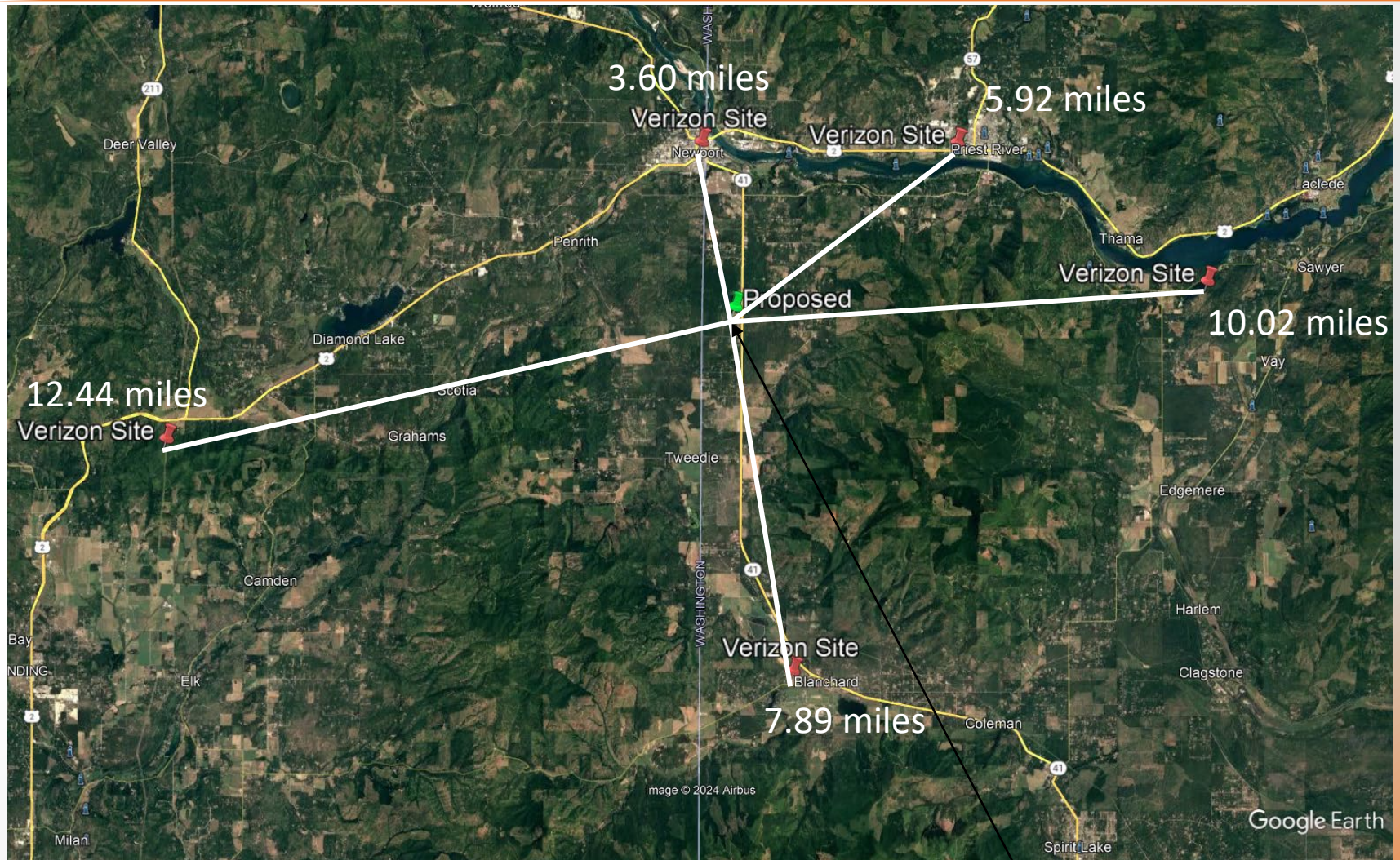
T-Mobile Sites



Average distance to neighbor sites: 7.97 miles

2024

Verizon Sites

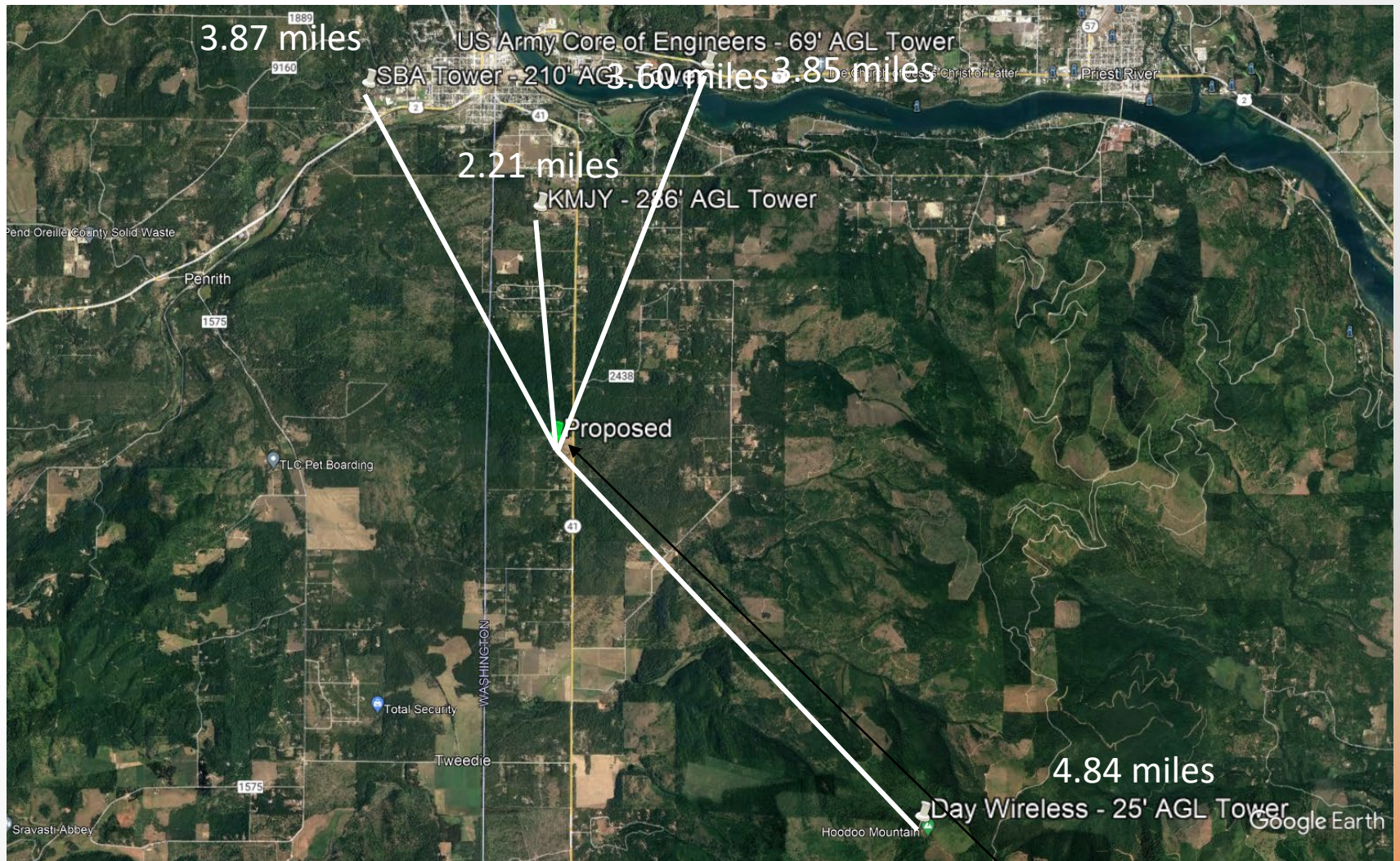


Average distance to neighbor sites: 7.97 miles

Proposed Site

2024

Alternate Sites



Proposed Site

2024

Alternate Site Analysis

- † Core of Engineers tower
 - 69' AGL Tower
 - 2.17 miles from existing Verizon site
- † SBA tower
 - 210' AGL Tower
 - 1.46 miles from existing Verizon site
- † Day Wireless tower
 - 25' AGL Tower
 - 4.83 miles from site that is next to AT&T wireless site
- † KJMY tower
 - 286' AGL Tower
 - 1.45 miles from existing Verizon site

Recommendation

- † Alternate towers in the area will not provide the same level of service as the proposed
- † The Day Wireless site is next to an existing AT&T site that provides no service around the proposed
- † The KMJY tower is in the FCC database but is too close to the Newport area
- † Both the SBA and Core of Engineers towers are up along Highway 2 close to the neighbor Verizon sites
- † Recommend approval of the proposed