

Eppley Property Zoning Violation

Case No. ZV0052-23

Photos and Comments

In

Developing the 25 Foot Property Line Setback

And

Measurements from 25 Foot Property Line Setback

To

20' W x 35' L Metal Carport

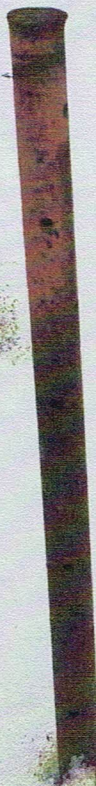
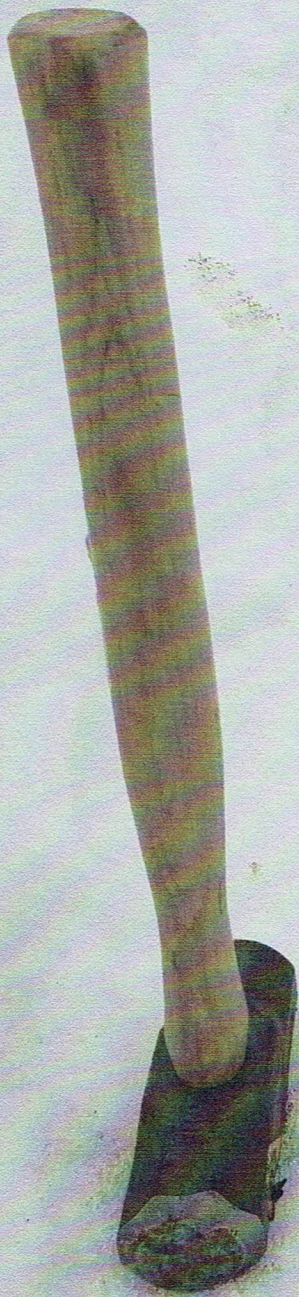
Spike & red ribbon  $\frac{1}{4}$  of East River Loop  
marker below road Looking West  
Surface for future Reference 25' Tape Measure

#1



Spike & red ribbon  
marker buried below  
East River Loop Road  
Surface (for future reference)

# 2



pin is at 25'6" from  
spike a red ribbon marker  
in the center of East  
River-Loop Road per  
BCRC 12-411 Minimum  
Property Line Setback is  
25 feet.

#3

Measuring Metal  
Carport Eve to 25 ft  
Property Setback Pin

#4

957 08



Metal Carport Post  
is 5 in. out from this  
Corner.

25' Tape Measure is  
set at 5 in. from  
that corner measuring  
to 25 ft. Property  
Setback Pin.

#5

Metal Carport Eave  
is 138 in. or 11 ft 6 in.  
from 25 ft Property  
Setback pin

#6