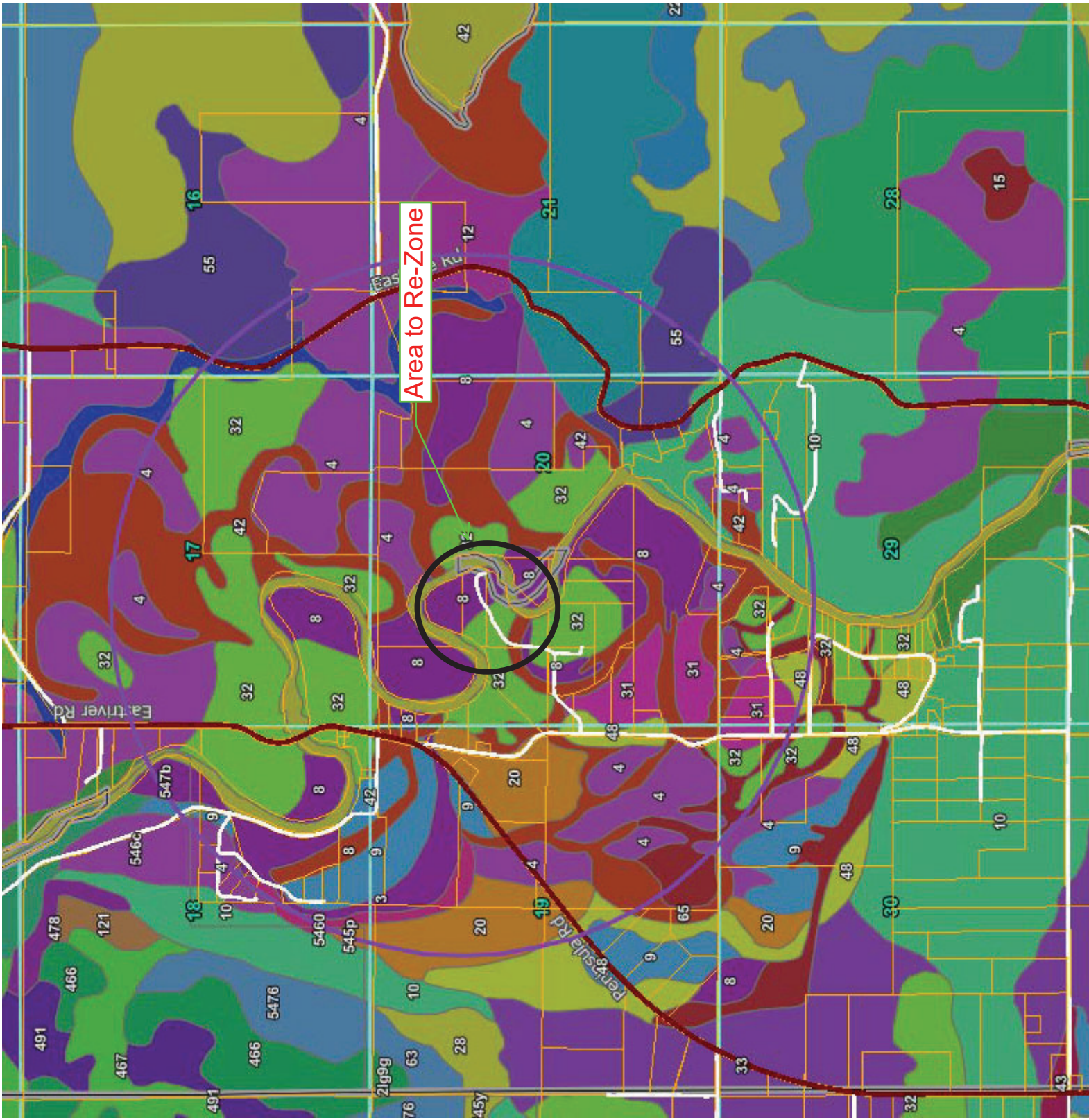




Floodway in RED

Area to re-zone in  
PURPLE



### Mission silt loam, 2 to 12 percent slopes

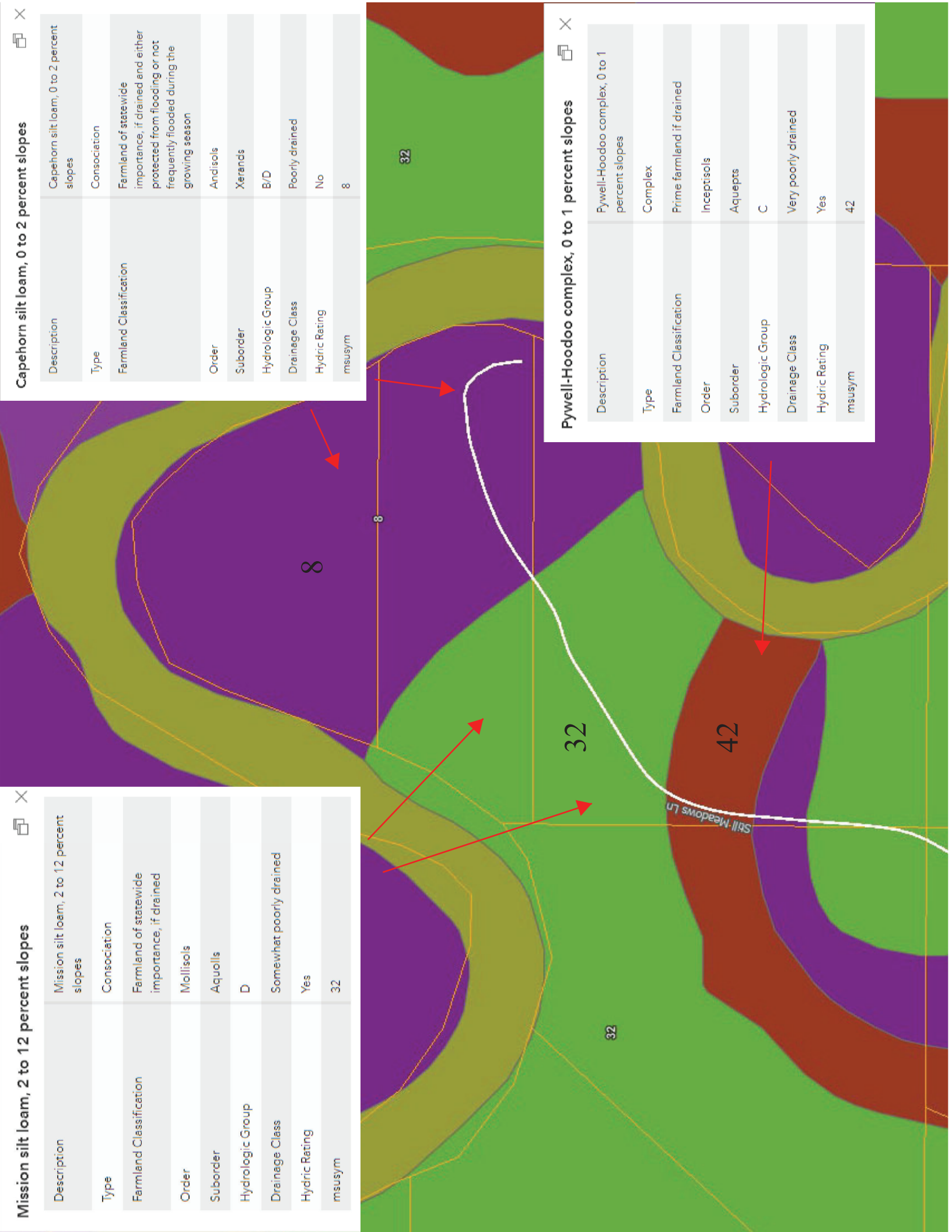
Description	Mission silt loam, 2 to 12 percent slopes
Type	Consociation
Farmland Classification	Farmland of statewide importance, if drained
Order	Mollisols
Suborder	Aquolls
Hydrologic Group	D
Drainage Class	Somewhat poorly drained
Hydric Rating	Yes
msusym	32

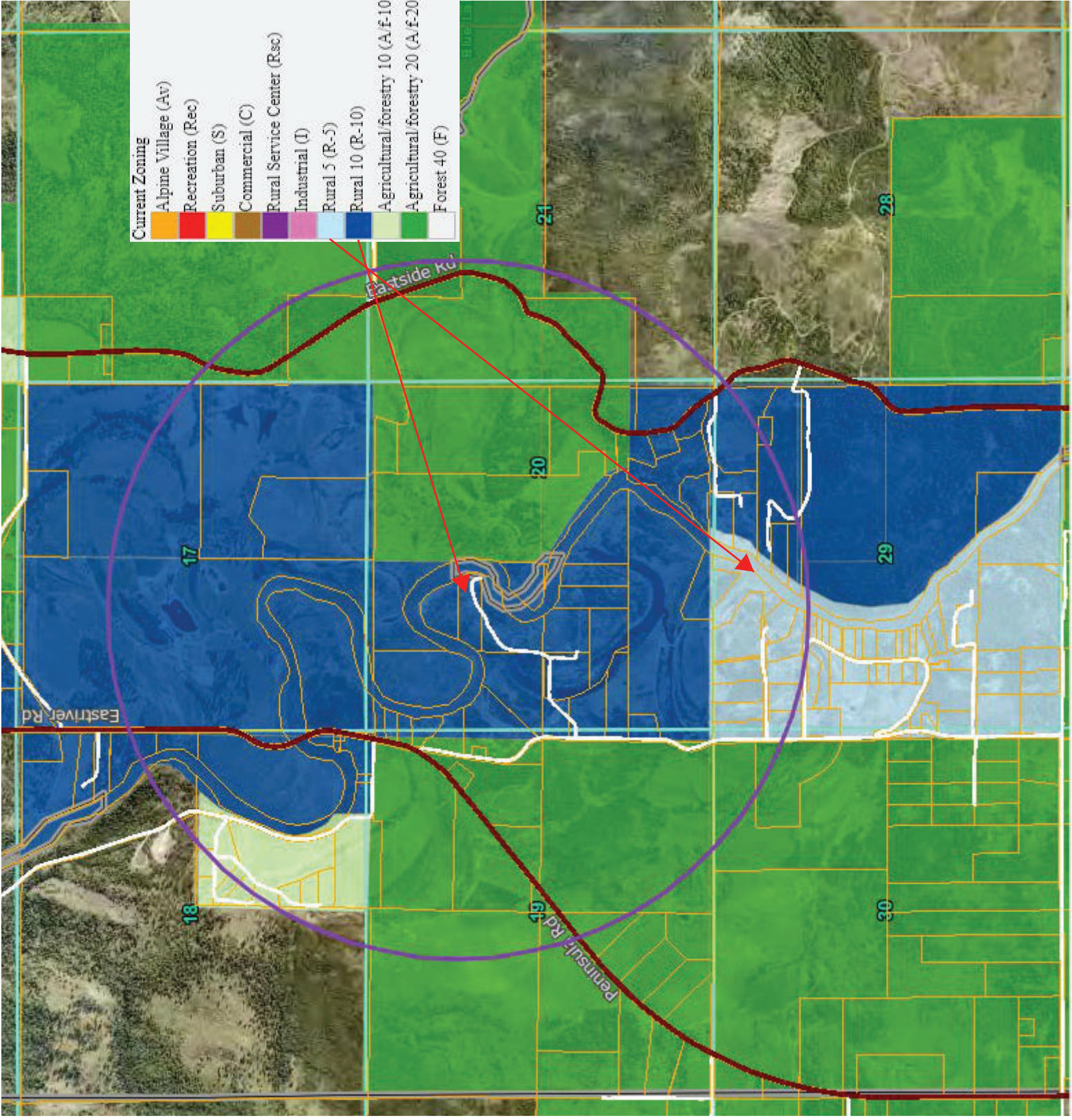
### Capehorn silt loam, 0 to 2 percent slopes

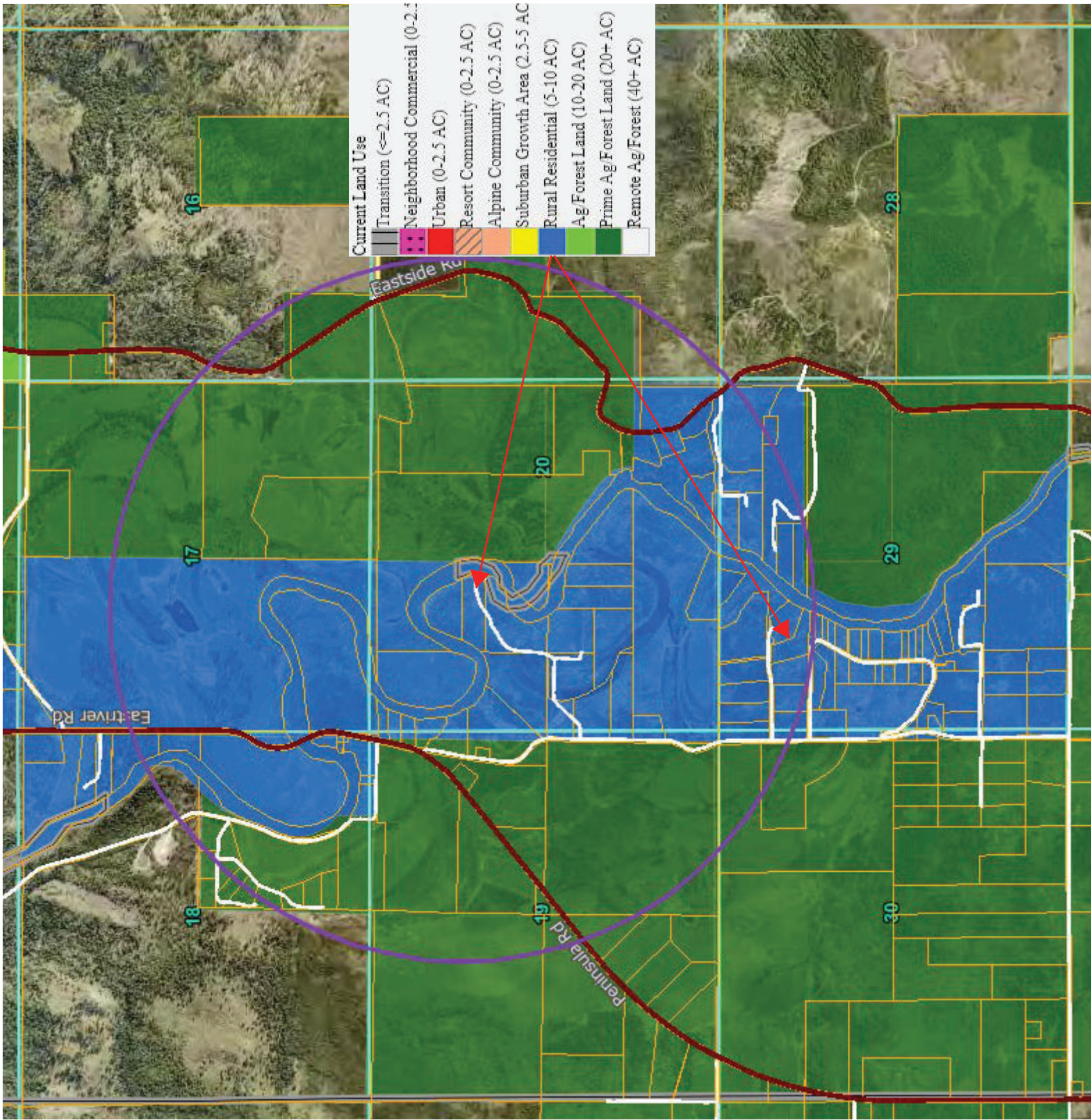
Description	Capehorn silt loam, 0 to 2 percent slopes
Type	Consociation
Farmland Classification	Farmland of statewide importance, if drained and either protected from flooding or not frequently flooded during the growing season
Order	Andisols
Suborder	Xerands
Hydrologic Group	B/D
Drainage Class	Poorly drained
Hydric Rating	No
msusym	8

### Pywell-Hoodoo complex, 0 to 1 percent slopes

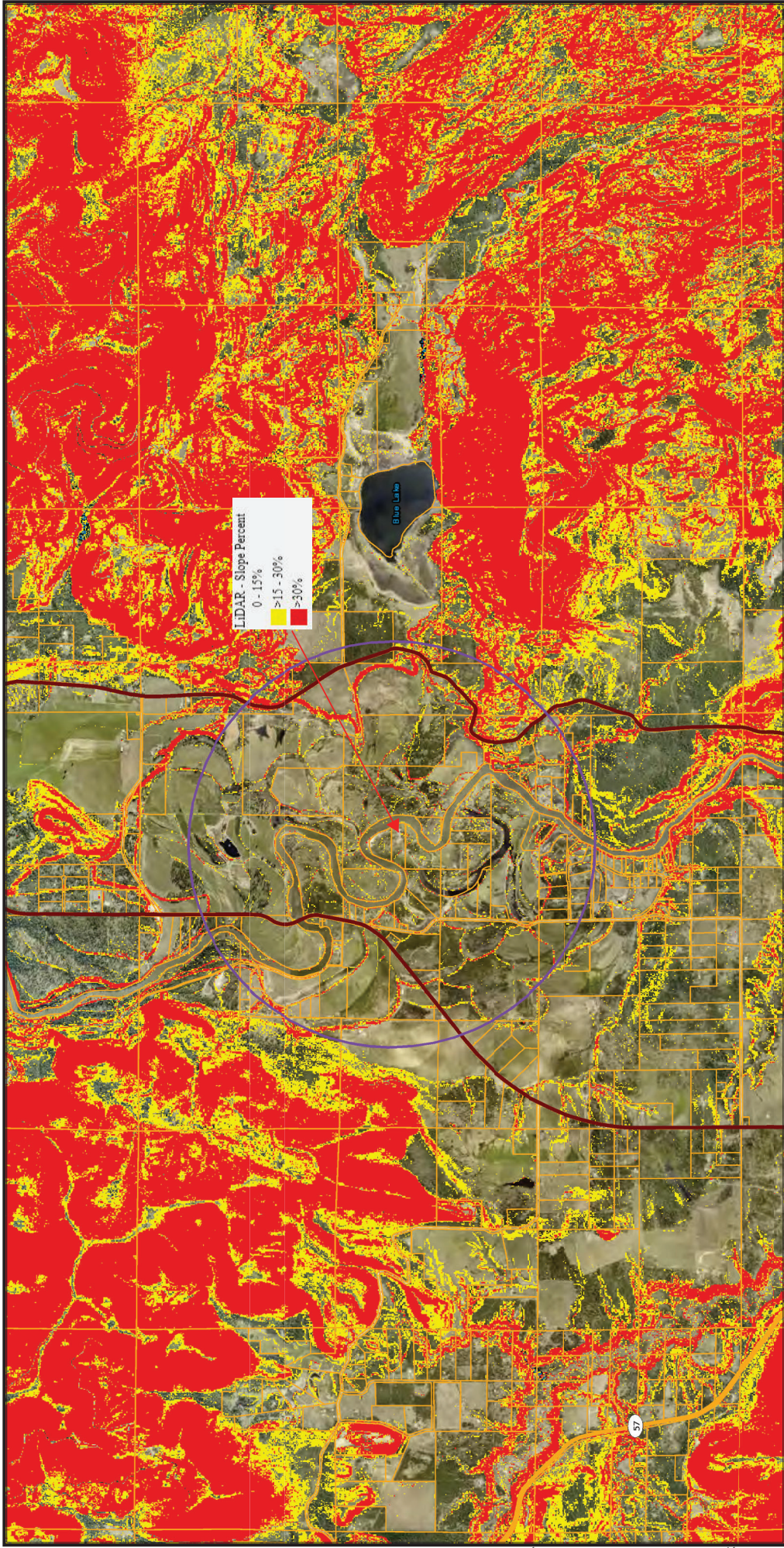
Description	Pywell-Hoodoo complex, 0 to 1 percent slopes
Type	Complex
Farmland Classification	Prime farmland if drained
Order	Inceptisols
Suborder	Aquepts
Hydrologic Group	C
Drainage Class	Very poorly drained
Hydric Rating	Yes
msusym	42







# Slopes



1/18/2024

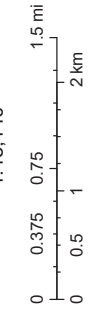
- Road Centerlines
- Primary
- Secondary
- Local; Ramp
- Parcels

- Slope\_USGS\_B1
- 0 - 15%
- >15 - 30%
- >30%
- World Boundaries and Places

- World Imagery
- Low Resolution 15m Imagery
- High Resolution 60cm Imagery
- High Resolution 30cm Imagery
- Citations

9.6m Resolution Metadata

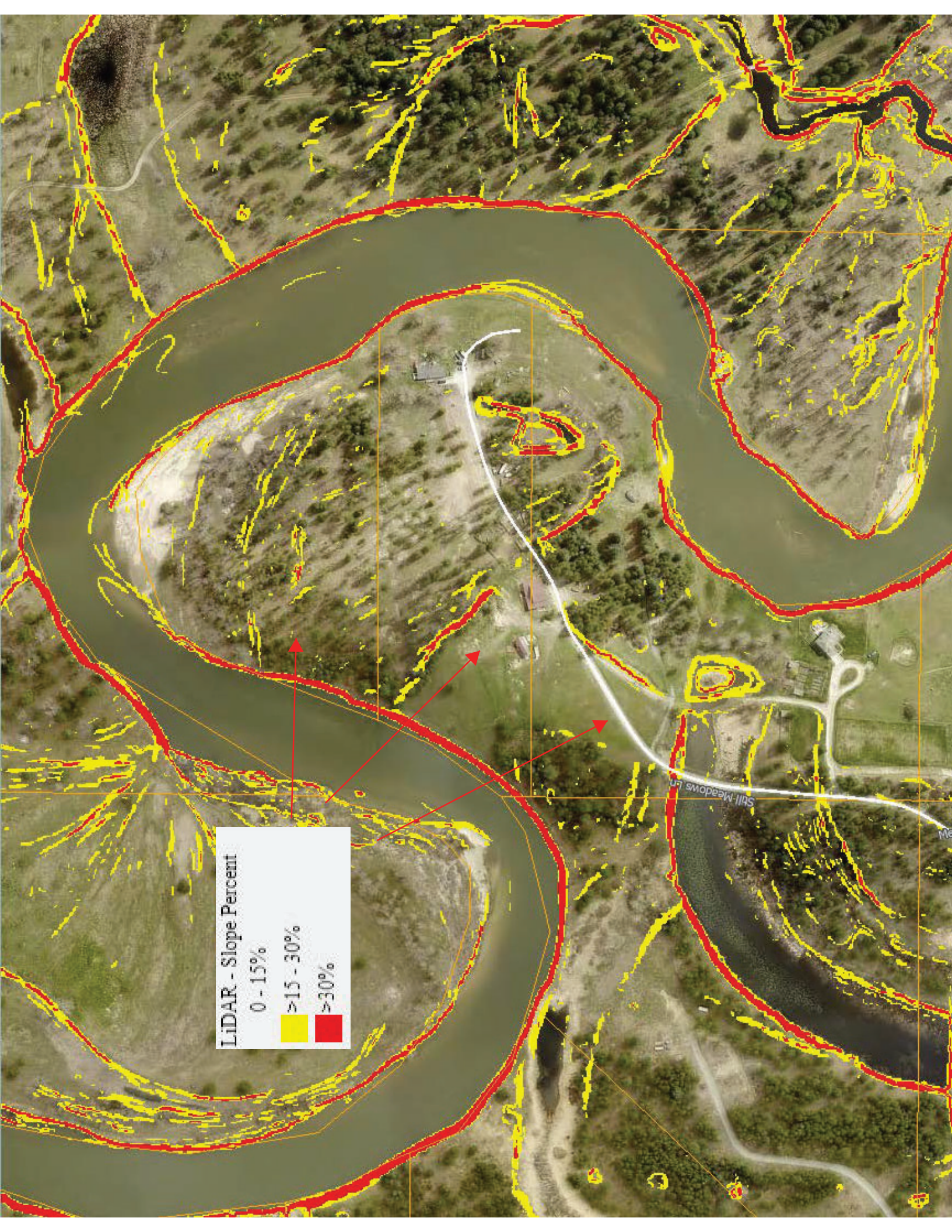
1:45,140



Esri, HERE, Garmin, (c) OpenStreetMap contributors, and the GIS user community  
 Source: Esri, Maxar, Earthstar Geographics, and the GIS User Community

Katie  
 Glene

Bonner County provides the data "as is" with no claim as to its accuracy.



**LiDAR - Slope Percent**

0 - 15%
>15 - 30%
>30%