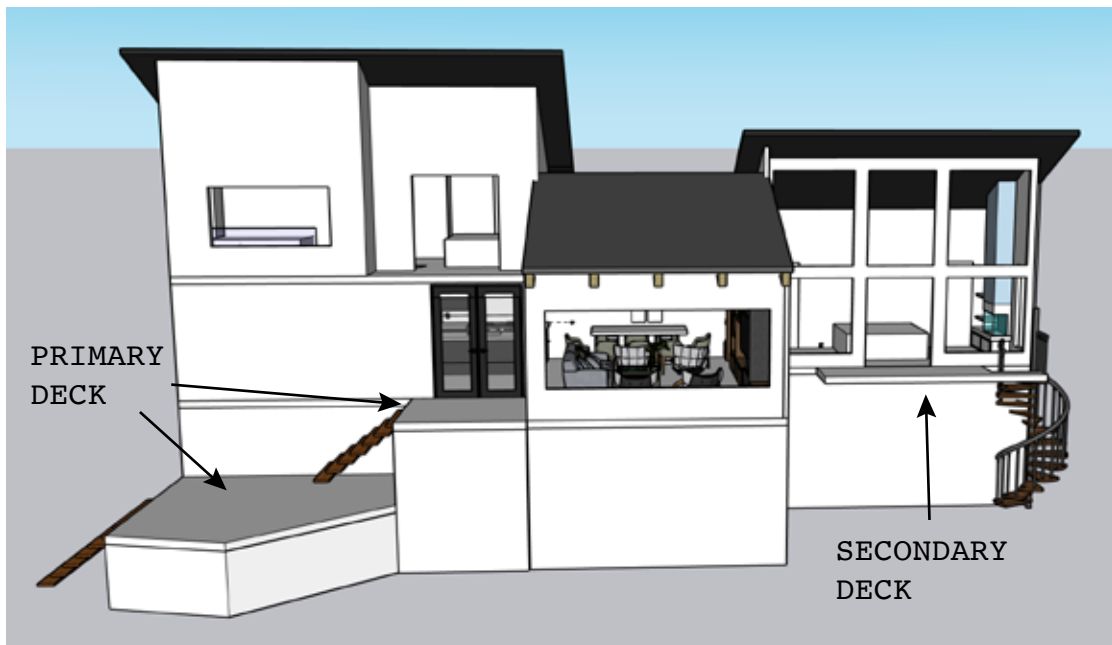




**PHOTO OF EXISTING HOUSE AND DECK CONFIGURATION**



**CAD MODEL OF EXISTING HOUSE AND DECK CONFIGURATION**

IN 4501 BOTTLE BAY ROAD  
SAGLE, ID 83860  
BONNOR COUNTY, IDAHO

DATE: 5/27/2025 SHEET 3 OF 5  
APPLICATION BY: IAN CAMPBELL

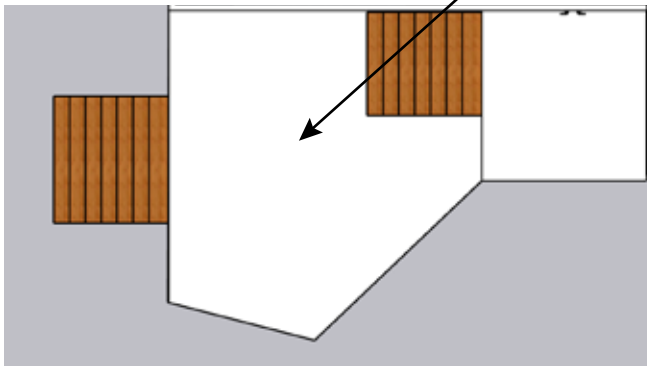
LEVEL PRIMARY DECKS  
INTO SINGLE DECK

EXTEND SECONDARY DECK  
TO FULL WIDTH AND DEPTH  
TO EDGES OF STRUCTURE

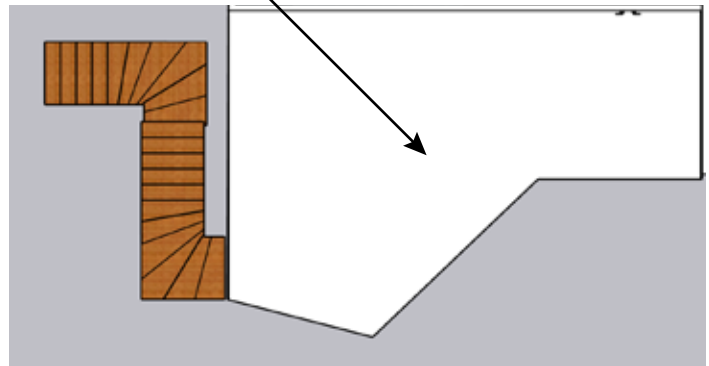


**CAD MODEL OF PROPOSED HOUSE AND DECK CONFIGURATION**

296 SQ. FT.  
NO CHANGE IN  
SQUARE FOOTAGE



**CAD MODEL TOP VIEW OF EXISTING  
PRIMARY DECK**



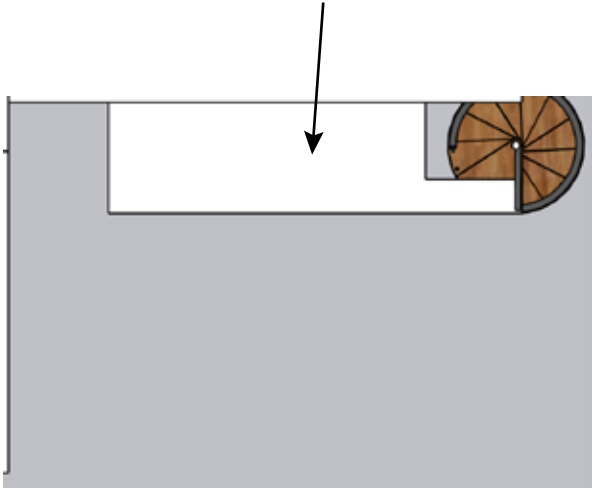
**CAD MODEL TOP VIEW OF PROPOSED  
PRIMARY DECK**

**NOTE:** STAIR DIMENSIONS AND LOCATIONS  
ARE APPROXIMATE

IN 4501 BOTTLE BAY ROAD  
SAGLE, ID 83860  
BONNOR COUNTY, IDAHO

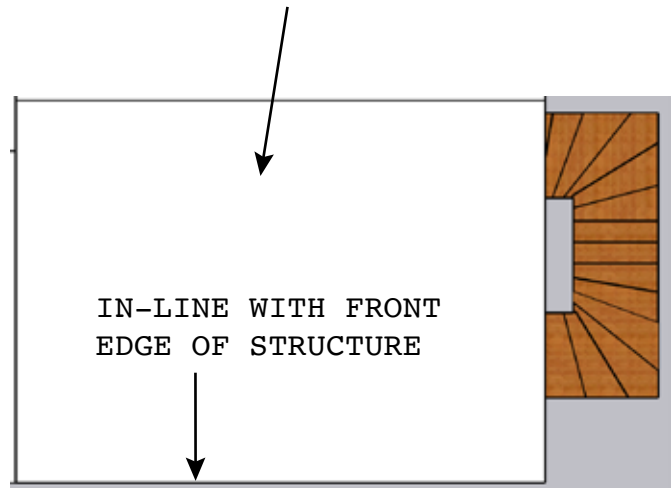
DATE: 5/27/2025 SHEET 4 OF 5  
APPLICATION BY: IAN CAMPBELL

APPROX 60 SQ. FT



**CAD MODEL TOP VIEW OF EXISTING  
SECONDARY DECK**

APPROX 290 SQ. FT



**CAD MODEL TOP VIEW OF PROPOSED  
SECONDARY DECK**

**TOTAL CHANGE IN BULK:**

ORIGINAL DECK:	356 SQ. FT.
PROPOSED DECK:	586 SQ. FT.
CHANGE %:	65% INCREASE IN SQ. FT.

**NOTE:** STAIR DIMENSIONS AND LOCATIONS  
ARE APPROXIMATE

IN 4501 BOTTLE BAY ROAD  
SAGLE, ID 83860  
BONNOR COUNTY, IDAHO

DATE: 5/27/2025 SHEET 5 OF 5  
APPLICATION BY: IAN CAMPBELL