

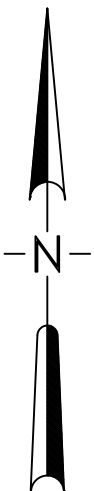
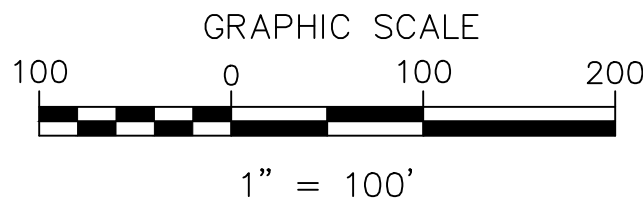
RECORD OF SURVEY

BOUNDARY LINE ADJUSTMENT

LYING IN A PORTION OF GOVERNMENT LOT 1, SECTION 17, T.56N., R.1E., B.M.
BONNER COUNTY, ID

1/4 CORNER
FOUND 1 1/2" COPPERWELD
PER CP&F FILED 01-09-1980

S8
S17



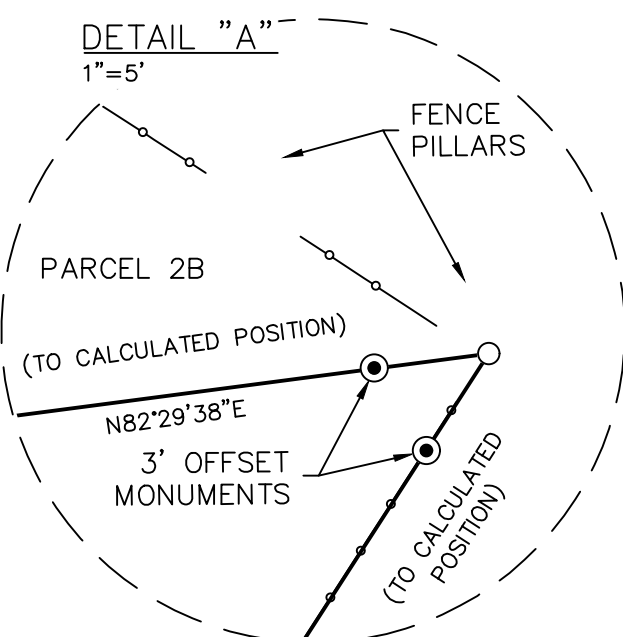
CURVE TABLE					
NUM	DELTA	ARC	RADIUS	BEARING	DISTANCE
C1	48°54'56"	66.48'	77.87'	N41°59'03"E	64.48'

LINE TABLE		
NUM	BEARING	DISTANCE
L1	S19°29'24"E	77.86'
L2	S87°21'33"E	33.63'
L3	S87°32'40"E	43.72'
L4	N7°34'15"E	4.83'
L5	N17°31'36"E	42.72'
L6	N66°26'30"E	73.98'
L7	N50°39'10"E	13.69'
L8	N11°55'13"W	64.31'
L9	S32°46'44"W	72.11'
L10	S20°19'01"E	79.72'
L11	N83°54'38"E	48.67'
L12	S19°29'24"E	46.09'
L13	N32°09'03"W	58.58'
L13 - TIE LINE ONLY		

ACCESS ROAD LINE TABLE		
NUM	BEARING	DISTANCE
L14	N82°29'38"E	72.12'
L15	N36°16'11"E	76.94'
L16	N6°25'00"E	46.42'
L17	N1°07'46"E	79.82'
L18	N89°26'24"E	128.08'

REFERENCES

- (P1) THIRD ADD. TO WALSONS LAKE LOTS, BK. 3, PG. 20,
INSTR. NO. 118319, BY RLS 687 (1968)
- (P2) PLAT OF LOT 7 OF THE 3RD ADD. TO WALSTON'S LAKE LOTS,
BK4, PG.19, INSTR. NO. 289002, BY RLS 974 (1984)
- (R1) RECORD OF SURVEY INSTR. NO. 233855, BY RLS 974 (1980)
- (R2) RECORD OF SURVEY INSTR. NO. 560384, BY RLS 974 (2000)
- (R3) RECORD OF SURVEY INSTR. NO. 705293, BY PLS 6107 (2006)
- (R4) RECORD OF SURVEY INSTR. NO. 807655, BY PLS 7879 (2011)
- (R5) RECORD OF SURVEY INSTR. NO. 1007673, BY PLS 6107 (2022)
- (R6) RECORD OF SURVEY INSTR. NO. 1017206, BY PLS 14214 (2023)
- (D1) GRANT DEED FOR BOUNDARY LINE ADJUSTMENT INSTR. NO.
1017205



BASIS OF BEARING
N89°56'53"W
1509.45'
(1509.53' -R4)

DETAIL "B"
1"=5'

TIE LINE ONLY

PARCEL 1B

3.0'

145.98'

N34°29'09"E

148.98'

TIE LINE ONLY

EXTENDS TO
ORIGINAL
HIGH-WATER
LINE

S68°58'39"E

563.63'

S56°48'20"W

S36°47'30"W

563.56'

(S56°48'20"W - R3,R5)

S68°58'39"E

EXTENDS TO ORIGINAL
HIGH-WATER LINE

S68°58'39"E

264.91'

(264.75' - R3,R5)

N88°59'24"W

264.91'

PARCEL 1B

2.03 Acres.*

88549.0 Sq.ft.*

DETAIL "B"

S68°58'39"E

148.98'

N34°29'09"E

145.98'

TIE LINE ONLY

741.79'

APPROX. SUMMER POOL

APPROXIMATE SUMMER POOL

LAKE PEND OREILLE

EXTENDS TO ORIGINAL
HIGH-WATER LINE

L11

6

(P1)

5

4

3

2

1

0

1

2

3

4

5

6

7

8

9

0

1

2

3

4

5

6

7

8

9

0

1

2

3

4

5

6

7

8

9

0

1

2

3

4

5

6

7

8

9

0

1

2

3

4

5

6

7

8

9

0

1

2

3

4

5

6

7

8

9

0

1

2

3

4

5

6

7

8

9

0

1

2

3

4

5

6

7

8

9

0

1

2

3

4

5

6

7

8

9

0

1

2

3

4

5

6

7

8

9

0

1

2

3

4

5

6

7

8

9

0

1

2

3

4

5

6

7

8

9

0

1

2

3

4

5

6

7

8

9

0

1

2

3

4

5

6

7

8

9

0

1

2

3

4

5

6

7

8

9

0

1

2

3

4

5

6

7

8

9

0

1

2

3

4

5

6

7

8

9

0

1

2

3

4

5

6

7

8

9

0

1

2

3

4

5

6

7

8

9

0

1

2

3

4

5

6

7

8

9

0

1

2

3

4

5

6

7

8

9

0

1

2

3

4

5

6

7

8

9

0

1

2

3

4

5

6

7

8

9

0

1

2

3

4

5

6

7

8