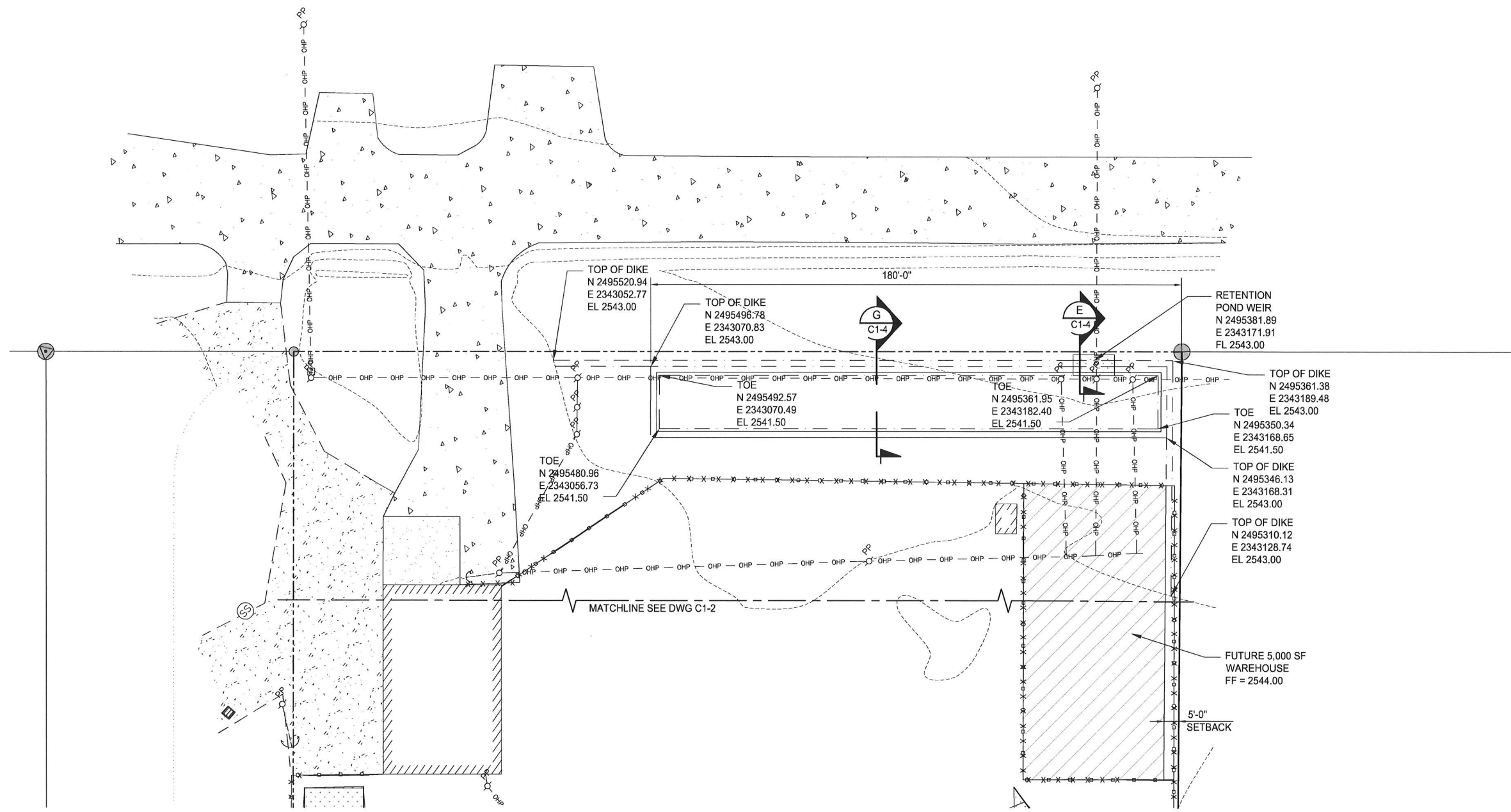


EARTHWORK QUANTITIES

3" TOPSOIL STRIPPING	48 CY
CUT	97 CY
FILL	25 CY
NET	72 CY (CUT)
AGGREGATE BASE	4 TONS
SEPARATION FABRIC	11 SY
SWITCHYARD ROCK	3 TONS



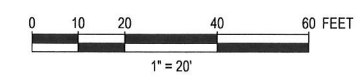
RETENTION POND

TOTAL IMPERVIOUS AREA	84,633 SF
REQUIRED RETENTION VOLUME	3,526 CF
AVAILABLE RETENTION VOLUME	3,640 CF

NOTES

- SEE DRAWING C1-2 FOR NOTES AND LEGEND.

ISSUED FOR
 04/11/2025
BID



THIS DRAWING WAS PREPARED BY POWER ENGINEERS, INC. FOR A SPECIFIC PROJECT. TAKING INTO CONSIDERATION THE SPECIFIC AND UNIQUE REQUIREMENTS OF THE PROJECT, REUSE OF THIS DRAWING OR ANY INFORMATION CONTAINED IN THIS DRAWING FOR ANY PURPOSE IS PROHIBITED UNLESS WRITTEN PERMISSION FROM BOTH POWER AND POWER'S CLIENT IS GRANTED.

00	ISSUED FOR BID	04/11/2025	CA	CA	JLM	JDR	C1-2	GRADING PLAN AND NOTES
REV	REVISIONS	DATE	DRN	DSGN	CKD	APPD	E2-1	ELECTRICAL ASSEMBLY PLAN
								REFERENCE DRAWINGS

DSGN	MJW	03/10/2025
DRN	DLK	03/12/2025
CKD	-	-
SCALE: 1"=20'-0"		
FOR 22/24 DWG ONLY		



NORTHERN LIGHTS, INC.	
LAMB CREEK SUBSTATION	
GRADING PLAN STORMWATER RETENTION	

JOB NUMBER	REV
0250427	00
DRAWING NUMBER	
45-C1-3	

