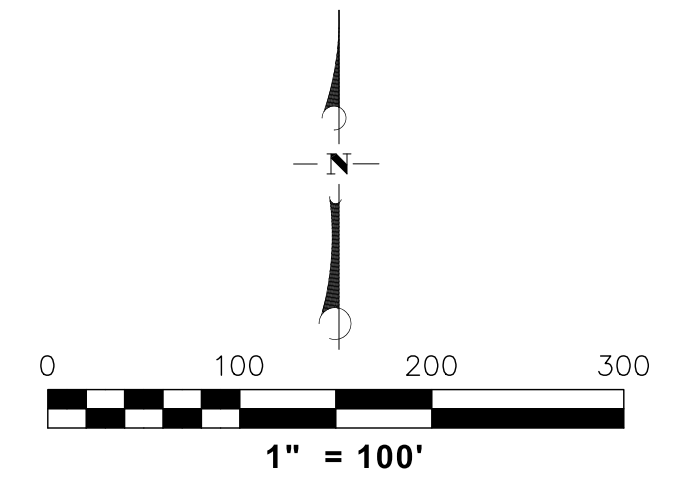




PRELIMINARY PLAT OF UPLAND ACRES - 1ST ADDITION

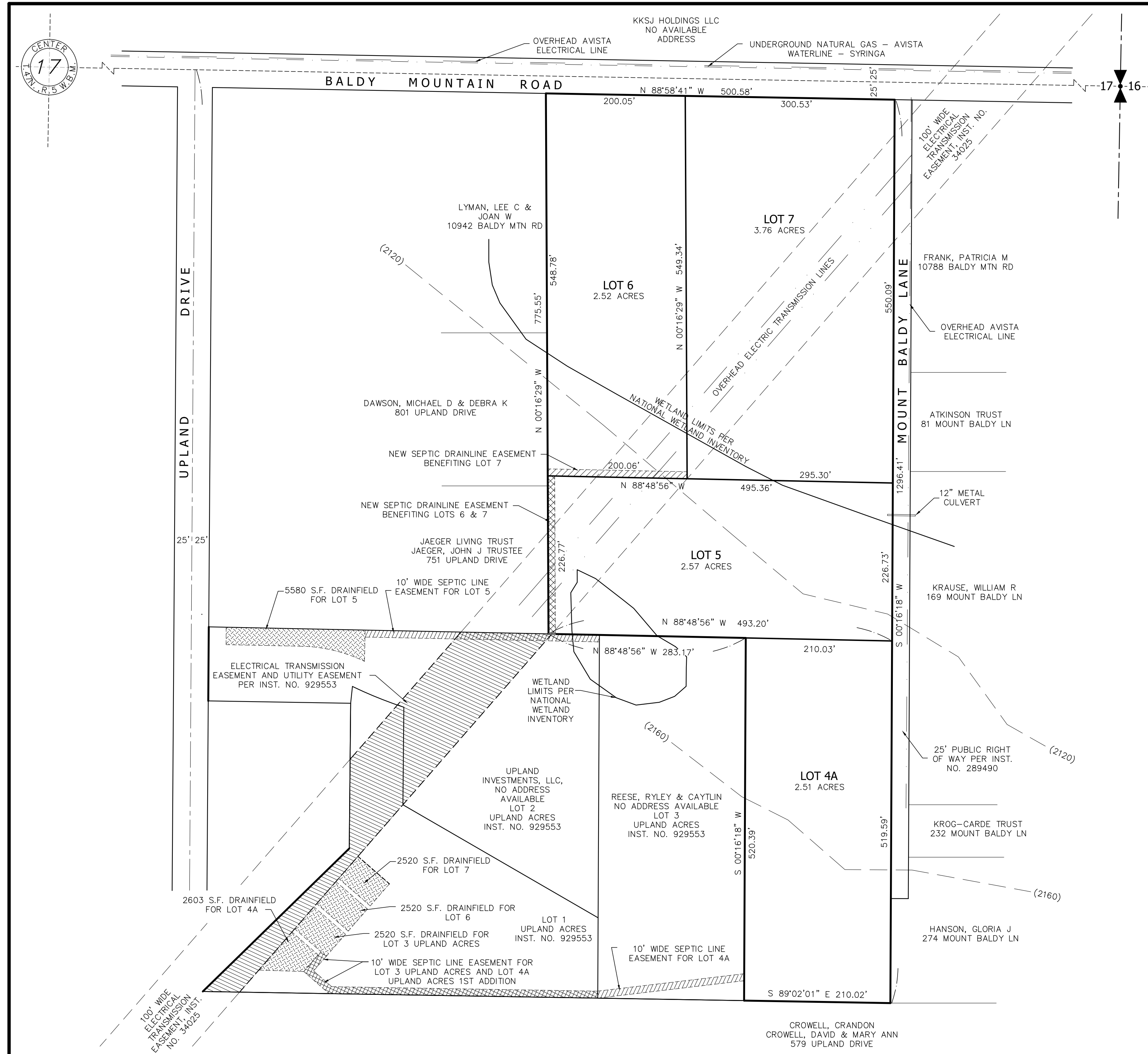
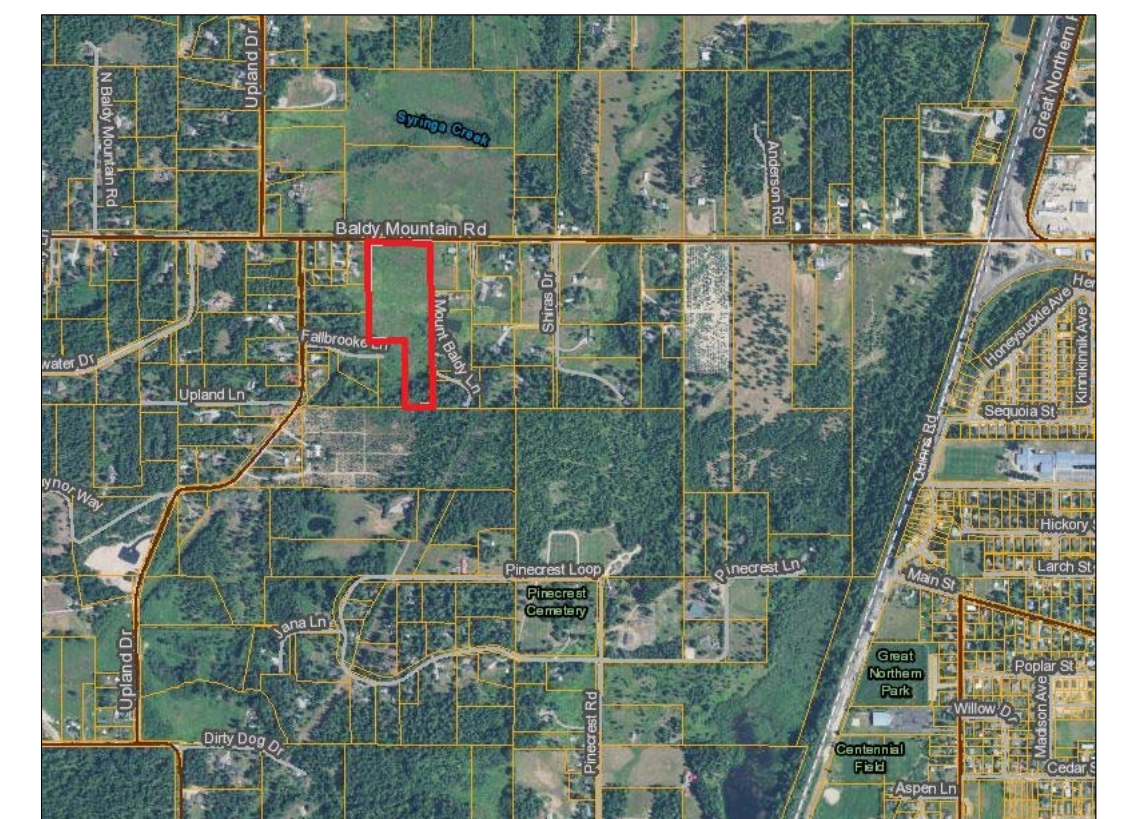
A REPLAT OF LOT 4 OF UPLAND ACRES IN SECTION 17, TOWNSHIP 57 NORTH, RANGE 2 WEST, BOISE MERIDIAN, BONNER COUNTY, IDAHO



NOTES

1. WATER WILL BE SUPPLIED BY SYRINGA WATER OR INDIVIDUAL WELLS
2. SEWAGE DISPOSAL SYSTEM WILL BE CONSTRUCTED IN A MANNER APPROVED BY PANHANDLE HEALTH DEPARTMENT AND DRAINFIELDS LOCATED AS SHOWN HEREON.
3. SOLID WASTE WILL BE DISPOSED OF IN A MANNER APPROVED BY BONNER COUNTY.
4. INTENDED USE OF PARCELS INCLUDE RESIDENTIAL, AGRICULTURAL, AND/OR USES APPROVED BY BONNER COUNTY WITHIN THE SUBURBAN ZONE.

VICINITY MAP



<p>PRAXIS LAND SURVEYING</p> <p>1628 CENTER VALLEY ROAD SANDPOINT, ID 83864 (208) 217-1748</p>	PRELIMINARY PLAT OF: UPLAND ACRES - 1ST ADDITION				DRAWN BY: GWD	SCALE: AS NOTED
	1/4	SEC	T	R	CHECKED BY: GWD	DATE: APRIL 2019
		17	57N	2W	JOB NO: 18035	SHEET: 1 OF 1